

## The Essential Spectrum of Neumann Laplacians on Some Bounded Singular Domains

RAINER HEMPEL,<sup>\*,†</sup> LUIS A. SECO, AND BARRY SIMON<sup>‡</sup>

*California Institute of Technology, Division of Mathematics,  
Physics and Astronomy, Pasadena, California 91125*

*Communicated by L. Gross*

Received August 2, 1990

In the present paper we consider Neumann Laplacians on singular domains of the type “rooms and passages” or “combs” and we show that, in typical situations, the essential spectrum can be determined from the geometric data. Moreover, given an arbitrary closed subset  $S$  of the non-negative reals, we construct domains  $\Omega = \Omega(S)$  such that the essential spectrum of the Neumann Laplacian on  $\Omega$  is just this set  $S$ . © 1991 Academic Press, Inc.

### INTRODUCTION

Going back to Weyl’s celebrated article on the asymptotics of Dirichlet regions in two dimensions, there is an enormous literature on Laplacians associated to regions of  $\mathbf{R}^n$ . Much of the literature is on the Dirichlet case which is easier, in part, because of compactness results. In this paper, we want to contribute to the study of the Neumann case, most particularly to identify the essential spectrum for Neumann Laplacians for some special regions.

Given an open region,  $\Omega$ , in  $\mathbf{R}^n$ , we let  $\mathcal{D}(-A_N^\Omega)$  be the set of all functions in  $L^2(\Omega)$  whose distributional gradients are in  $L_2$  and we define  $-A_N^\Omega$  via the quadratic form relation

$$\langle \phi, -A_N^\Omega \phi \rangle = \int |\nabla \phi(x)|^2 d^n x.$$

\* On leave from Mathemat. Inst. der Univ. München, Theresienstr. 39, D-8000 München 2, Germany.

† Research supported by Deutsche Forschungsgemeinschaft and by USNSF under Grant DMS-8807816.

‡ Research partially supported under USNSF Grant DMS-8807816.

It is a well-known result of Meyers and Serrin (cf., e.g., Adams [1], Gilbarg and Trudinger [10]), that the functions in  $\mathcal{Q}(-\Delta_N^{\Omega})$  which are  $C^{\infty}$  in the interior are dense in  $\mathcal{Q}(-\Delta_N^{\Omega})$ . The closure of  $C_0^{\infty}(\Omega)$  is the form domain of the Dirichlet Laplacian.

Dirichlet Laplacians of bounded regions have discrete spectrum since it is not hard to show their resolvents are compact. On the other hand, it has been known for many years that Neumann Laplacians of bounded regions need not have purely discrete spectrum. Mind you, if the region is sufficiently regular, the Neumann Laplacian is compact—for example, if there is a piecewise smooth boundary. The following is an example of a region going back at least to Courant and Hilbert known as “rooms and passages.”

To construct a typical rooms and passages domain (as shown in Fig. 1), take a sequence of *rooms* (= open rectangles  $R_k$ , contained in the unit ball of  $\mathbf{R}^2$ ,  $k \in \mathbf{N}$ ,  $R_k$  symmetric with respect to the  $x$ -axis, and such that  $\bar{R}_k \cap \bar{R}_j = \emptyset$ ,  $k \neq j$ ), which are joined together by *passages* (= rectangles  $P_k$ ,  $k \in \mathbf{N}$ ,  $P_k$  symmetric with respect to the  $x$ -axis) of height much smaller than the height of the adjoining rooms  $R_k$  and  $R_{k-1}$ .

If the passages are narrow enough, the Neumann Laplacian for this region has 0 in the essential spectrum. For, let  $\phi_n$  be a function which is a large constant in the  $n$ th room and which drops linearly to 0 between the room and the midpoint of the adjacent passages. Choose the constant so that  $\phi_n$  has norm 1. Since they have disjoint supports, the  $\phi_n$  are orthonormal. The size of  $\|\nabla\phi_n\|$  is proportional to the width of the passages adjacent to box  $n$  and that can be made arbitrarily small.

One of the goals in this note is to actually show that for the rooms and passages example, the essential spectrum is exactly  $\{0\}$ , if the passages are narrow enough. Our main theorem is

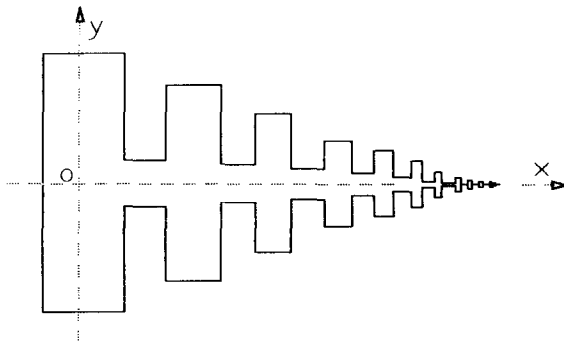


FIG. 1. Rooms and passages.

**THEOREM 0.1.** *Let  $S$  be any closed subset of  $[0, \infty)$  and let  $n$  be given. Then there exists an open, connected subset  $\Omega$  of the unit ball in  $\mathbf{R}^n$  so that*

$$\sigma_{ess}(-\Delta_N^\Omega) = S \quad \text{and} \quad \sigma_{ac}(-\Delta_N^\Omega) = \emptyset.$$

If  $S$  contains 0, we will be able to construct  $\Omega$  as a modification of rooms and passages—essentially, we will add a partition across each room with a hole in it. For general  $S$ , we will modify instead another class of regions known as “combs.”

To construct combs (as shown in Fig. 2), we attach a sequence of *teeth* (i.e., rectangles of bounded length and shrinking width) to a fixed square  $Q \subset \mathbf{R}^2$ . Here it is somewhat simpler to stack the teeth together instead of having empty space between them.

Basic to our entire strategy is that one can decouple into simpler regions. In the rooms and passages type regions, we will decouple into separate rooms and passages; in the combs, we will decouple the teeth of the comb from the handle  $Q$ . In the rooms and passages, the barriers we put in will have Neumann boundary conditions on the room side and Dirichlet conditions on the passage side. What we will show is that putting in such barriers on the infinity of room-passage joins will mean a compact perturbation of the resolvent so long as the passages are narrow enough (and a trace class perturbation on the level of squares of the resolvents). Since  $\sigma_{ess}$  is left invariant under compact perturbations, we will reduce the determination of the essential spectrum to that of decoupled regions. Since each individual

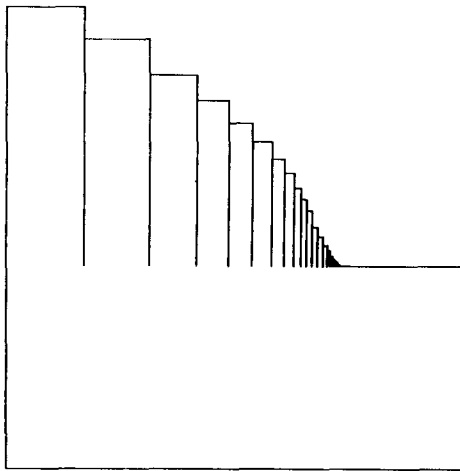


FIG. 2. A comb domain.

region has discrete spectrum, the essential spectrum will be the set of limit points of spectra of the regions and that will be easy to compute.

The somewhat surprising element of our decoupling is that from the passage side, the boundary condition is Dirichlet. We call this the organ pipe lemma because it is a reflection of the known fact that closed and open organ pipes have opposite boundary conditions. The reason that eigenfunctions in the passages must vanish near the boundary of the passage is the following: Because the passages are so small, for them to matter, the wave function must live in the passage and not much in the rooms. If these functions were not much smaller at the edge of the passage than in the middle, they would “leak” out into the rooms. This idea is made precise in Section 1, where we investigate the behavior of eigenvalues, eigenfunctions, and resolvents of the Neumann Laplacian on two domains  $\Omega_1$  and  $\Omega_2$  which are joined by a passage of width  $w$ , in the limit of  $w$  going to zero (Propositions 1.4 and 1.5). In Proposition 1.9, we deal in a similar manner with the situation where a family of small handles is attached to a fixed domain  $\Omega_0$ . There has been previous discussion of the effect of narrow passages and handles, not unrelated to our organ-pipe lemma; see Jimbo [11] and Arrieta, Hale, and Han [3].

In Section 2, we construct rooms and passages domains  $\Omega$  by successively joining a sequence of rooms by narrow passages and obtain norm-resolvent convergence of certain approximating Laplacians  $H_n$  to  $-A_N^\Omega$ . As in Simon and Spencer [16], the spectral results then follow from the fact that  $(H_1 + 1)^{-2} - (-A_N^\Omega + 1)^{-2}$  is trace class. Upon replacing each room in the above construction by a small rectangle with a partition, each of these modified rooms will contribute (to the spectrum of  $H_1$ ) an eigenvalue 0 plus another low-lying eigenvalue  $\lambda_k$ , while the remaining eigenvalues will be very large. By this construction, we can achieve to have

$$\sigma_{\text{ess}}(H_1) = \{0\} \cup \{\text{limit points of } \{\lambda_k\}\}.$$

(Domains similar to a union of finitely many rooms and passages have been used by Colin de Verdière [4] to specify a finite part of the Neumann spectrum.)

In an analogous manner, we analyze combs in Section 3, beginning with simple combs of the type described above and then proceeding to combs with small teeth  $D_k$  where each  $D_k$  has a partition (with “door”) to make sure that each  $D_k$  contributes precisely one low-lying eigenvalue  $\lambda_k$  to the spectrum of the fully decoupled comparison operator. As a consequence, we find that the essential spectrum of the Neumann Laplacian is given as the limit set of the sequence  $\{\lambda_k\}$ . Since this sequence can be preassigned in the construction of examples, Theorem 0.1 follows.

R. Hempel thanks D. Wales and G. Neugebauer for their hospitality at Caltech.

## 1. ORGAN PIPES

In this section we analyze the Neumann Laplacian on domains consisting of two "rooms" which are joined by a narrow passage of width  $w$ ,  $w$  small. It turns out that we have a natural Dirichlet boundary condition on the sides of the passage attached to the rooms (corresponding to the natural boundary condition for the pressure in an organ pipe at its open end). To be more precise, we will see that the resolvent of the Neumann Laplacian on the full domain is well approximated (in the operator norm) by the resolvent of a certain decoupled operator which has pure Neumann boundary conditions along the boundary of the two rooms and mixed Dirichlet and Neumann boundary conditions for the passage.

Here a word about the definition of Laplacians with Neumann or mixed boundary conditions is in order. For a general open domain  $\Omega \subset \mathbf{R}^n$ , the Neumann Laplacian is most naturally defined via quadratic forms, starting from the Sobolev space  $\mathcal{H}^1(\Omega) = W^{1,2}(\Omega)$ . This Sobolev space may be obtained as the completion of the function space

$$\{f \in C^\infty(\Omega) \mid \|f\|_{\mathcal{H}^1(\Omega)} < \infty\}$$

under the norm  $\|\cdot\|_1 = \|\cdot\|_{\mathcal{H}^1(\Omega)}$ , where

$$\|f\|_{\mathcal{H}^1(\Omega)}^2 = \int_{\Omega} |f|^2 + |\nabla f|^2.$$

Then  $-\Delta_N^\Omega$  is defined (as in Reed and Simon [15, Sect. XIII.15]) as the unique non-negative, self-adjoint operator whose domain  $\mathcal{D}(-\Delta_N^\Omega)$  is contained and dense in  $\mathcal{H}^1(\Omega)$ , and which satisfies

$$\langle -\Delta_N^\Omega u, v \rangle = \langle \nabla u, \nabla v \rangle, \quad u \in \mathcal{D}(-\Delta_N^\Omega), \quad v \in \mathcal{H}^1(\Omega).$$

Similarly, Laplacians with mixed Neumann and Dirichlet boundary conditions can be defined in the following way. Suppose  $\Gamma = \bar{\Gamma} \subset \partial\Omega$  is given. Let

$$\mathcal{H}_\Gamma^1(\Omega) \subset \mathcal{H}^1(\Omega)$$

be the completion of

$$\{f \in C^\infty(\Omega) \mid \|f\|_{\mathcal{H}^1(\Omega)} < \infty, \text{supp } f \cap \Gamma = \emptyset\}$$

and consider the unique self-adjoint operator associated with  $\mathcal{H}_\Gamma^1(\Omega)$ ; this operator will be said to be the Laplacian on  $\Omega$  with Dirichlet boundary condition on  $\Gamma$  and Neumann boundary condition on  $\partial\Omega - \Gamma$ .

For  $u \in \mathcal{D}(-\Delta_N^\Omega)$ , we have the a priori information  $u \in \mathcal{H}^1(\Omega)$  and  $\Delta u \in L_2(\Omega)$ , but for irregular domains it may be very hard or impossible to

obtain useful bounds for  $\sup |u|$ . In Lemmas 1.1 and 1.2 we shall show, instead, that control of the  $\mathcal{H}^1$ -norm gives certain precise bounds on

$$\int_S u(x, y) \, dx \, dy$$

for small rectangles  $S$  (we are in  $\mathbf{R}^2$  now). These bounds will subsequently play the role of a weak substitute for a Dirichlet boundary condition in Lemma 1.3.

LEMMA 1.1. Consider a rectangle  $R \subset \mathbf{R}^2$ ,  $R = (0, l) \times (0, h)$ , made up of two adjacent subrectangles,  $R_1 = (0, l) \times (0, w)$  and  $R_2 = (0, l) \times (w, h)$ , where  $0 < w < h$ . Then, for  $u \in \mathcal{H}^1(R)$  we have

$$\left| \frac{1}{w} \int_{R_1} u \, dx \, dy - \frac{1}{h-w} \int_{R_2} u \, dx \, dy \right| \leq (hl)^{1/2} \|\nabla u\|.$$

*Proof.* Since  $C^\infty(R)$  is dense in  $\mathcal{H}^1(R)$  and  $R$  is convex, it is clear that we can assume  $u$  to be  $C^\infty(\bar{R})$ , without loss of generality.

Define

$$f(y) = \int_0^l u(x, y) \, dx$$

and

$$m_1 = \int_0^w f(y) \, dy = \int_{R_1} u(x, y) \, dx \, dy$$

$$m_2 = \int_w^h f(y) \, dy = \int_{R_2} u(x, y) \, dx \, dy.$$

Clearly, there are points  $y_1 \in [0, w]$  and  $y_2 \in [w, h]$  such that  $f(y_1) = m_1/w$ ,  $f(y_2) = m_2/(h-w)$ , and it follows that

$$\left| \frac{m_1}{w} - \frac{m_2}{h-w} \right| = \left| \int_{y_1}^{y_2} f'(y) \, dy \right| \leq \int_{y_1}^{y_2} \int_0^l |u_y(x, y)| \, dx \, dy \leq (hl)^{1/2} \|\nabla u\|$$

as claimed. Q.E.D.

The important point in the following simple lemma is to have the powers of  $w$  and  $l$  in the asymmetric version  $w \cdot l^{1/2}$ .

LEMMA 1.2. Let  $Q = (0, r) \times (0, h)$  and let  $S = (0, l) \times (0, w)$  (with  $0 < l \leq r$  and  $0 < w \leq h/2$ ) be a subrectangle of  $Q$ .

Then, for  $u \in \mathcal{H}^1(Q)$  we have

$$\left| \int_S u \, dx \, dy \right| \leq C w l^{1/2} \|u\|_{\mathcal{H}^1(Q)}$$

with a constant  $C$  depending on  $h$  only.

*Proof.* Let

$$\tilde{Q} = (0, l) \times [w, h), \quad Q^* = S \cup \tilde{Q}.$$

Applying Lemma 1.1 to  $Q^*$ , we obtain

$$\begin{aligned} \left| \frac{1}{w} \int_S u \right| &\leq (lh)^{1/2} \|\nabla u\|_{L_2(Q^*)} + \frac{1}{(h-w)} \left| \int_{\tilde{Q}} u \right| \\ &\leq C_h l^{1/2} \|u\|_{\mathcal{H}^1(Q^*)} \end{aligned}$$

with  $C_h = h^{1/2}(1 + 2/h)$ , and the result follows.

Q.E.D.

In the subsequent lemma we consider a passage  $P_w = (0, L) \times (0, w)$  of fixed length  $L$  and width  $w \leq L$ , with two adjoining rectangles  $S_1$  and  $S_2$  of length  $l = l_w = w^{1/2}$ ,  $S_1 = (-l, 0] \times (0, w)$ , and  $S_2 = [L, L+l) \times (0, w)$ .

Let  $-\Delta_{DN}^{P_w}$  denote the Laplacian on  $P_w$  with Dirichlet boundary conditions at the ends of  $P_w$  and Neumann on the long sides of  $P_w$ . Also, let

$$0 < \mu_1 \leq \mu_2 \leq \dots \leq \mu_k \leq \dots$$

denote the eigenvalues of  $-\Delta_{DN}^{P_w}$ , repeated according to their multiplicities, and let  $\{\psi_j\}_{j \in \mathbb{N}}$  denote a complete orthonormal set of eigenfunctions satisfying

$$-\Delta_{DN}^{P_w} \psi_j = \mu_j \psi_j, \quad j = 1, 2, \dots$$

Clearly, any function  $v$  in the form domain of  $-\Delta_{DN}^{P_w}$  which is orthogonal to  $\psi_1, \dots, \psi_k$  satisfies the inequality

$$\|\nabla v\|^2 \geq \mu_{k+1} \|v\|^2.$$

We wish to extend this property to a family of functions  $v_w \in \mathcal{H}^1(S_1 \cup P_w \cup S_2)$  which do not really obey a Dirichlet boundary condition, but instead, satisfy the condition

$$\int_{S_q} v_w = O(w l^{1/2}) \quad \text{as } w \rightarrow 0.$$

LEMMA 1.3. *Let  $k \in \mathbf{N}_0$  be fixed. Suppose we are given a family  $\{v_w\}_{0 < w \leq 1}$  of functions  $v_w \in \mathcal{H}^1(S_1 \cup P_w \cup S_2)$  which satisfy the following conditions:*

- (i)  $\|v_w\|_{\mathcal{H}^1(S_1 \cup P_w \cup S_2)}^2 \leq C_0, 0 < w \leq 1$ , for some constant  $C_0$ .
- (ii)  $\langle v_w, \psi_j \rangle \rightarrow 0, w \rightarrow 0, j = 1, \dots, k$
- (iii)  $\int_{S_q} v_w \leq Awl^{1/2}, q = 1, 2, 0 < w \leq 1$ , for some constant  $A$ .

Then, for any  $\varepsilon > 0$  there exists  $w_\varepsilon$  such that

$$\|\nabla v_w \upharpoonright P_w\|^2 \geq \mu_{k+1} \|v_w \upharpoonright P_w\|^2 - \varepsilon, \quad 0 < w \leq w_\varepsilon.$$

*Remark.* We will apply this lemma only in cases where  $\langle v_w, \psi_j \rangle = 0, j = 1, \dots, k$ .

*Proof.* Again, we may assume  $v_w \in C^\infty(\overline{S_1 \cup P_w \cup S_2})$ .

On  $S_1 \cup P_w \cup S_2$  we define the functions  $\tilde{v} = \tilde{v}_w$  by

$$\tilde{v}(x, y) = \frac{1}{w} \int_0^w v(x, z) dz.$$

(Note that  $\tilde{v}$  is constant in the  $y$ -direction.) We then have

$$\begin{aligned} \|\nabla \tilde{v} \upharpoonright P_w\|^2 &\leq \|\nabla v \upharpoonright P_w\|^2 \\ \|\tilde{v} \upharpoonright P_w\|^2 &\geq \|v \upharpoonright P_w\|^2 - w^2 \|v \upharpoonright P_w\|_1^2. \end{aligned} \tag{1.1}$$

In order to prove (1.1), expand  $v \upharpoonright P_w$  in terms of eigenfunctions of  $-\Delta_N^{P_w}$

$$v \upharpoonright P_w = \sum_{p, q \in \mathbf{N}_0} \hat{v}(p, q) e_{p, q},$$

where  $\hat{v}(p, q) = \langle v, e_{p, q} \rangle$  and the  $e_{p, q}$  are given by

$$w^{-1/2} L^{-1/2} \cos\left(\frac{\pi p x}{L}\right) \cos\left(\frac{\pi q y}{w}\right), \quad p, q \in \mathbf{N}_0$$

with normalizing factor between 1/2 and 2. Clearly,

$$(v - \tilde{v}) \upharpoonright P_w = \sum_{\substack{p, q \in \mathbf{N}_0 \\ q \neq 0}} \hat{v}(p, q) e_{p, q}$$

and, since  $v \upharpoonright P_w \in \mathcal{H}^1(P_w) = \mathcal{Q}(-\Delta_N^{P_w})$ ,

$$\|\nabla v \upharpoonright P_w\|^2 = \pi^2 \sum_{p, q \neq (0, 0)} \left(\frac{p^2}{L^2} + \frac{q^2}{w^2}\right) |\hat{v}(p, q)|^2$$



so that

$$\|(v - \tilde{v}) \upharpoonright P_w\|^2 \leq \frac{w^2}{\pi^2} \|\nabla v \upharpoonright P_w\|^2 \leq \frac{w^2}{\pi^2} C_0. \tag{1.2}$$

Next, assumption (iii) implies that there exist  $-l < x_1 \leq 0$  and  $L \leq x_2 < L + l$  such that

$$|\tilde{v}(x_i, y)| \leq Al^{-1/2}, \quad 0 \leq y \leq w.$$

Let  $\xi_1 = 0$  and  $\xi_2 = L$ , so that  $\xi_i$  is the  $x$ -coordinate of the left or right end of  $P_w$ . We then have

$$|\tilde{v}(\xi_i, y)| \leq \tilde{A}w^{-1/4}, \quad 0 \leq y \leq w \tag{1.3}$$

by the following easy argument. Let  $h_i = |\tilde{v}(x_i) - \tilde{v}(\xi_i)|$  for  $i = 1, 2$ , so that  $|\tilde{v}(\xi_i, y)| \leq Al^{-1/2} + h_i$  for  $0 \leq y \leq w$ . Using the trivial inequality

$$|f(0) - f(t)|^2 \leq t \int_0^t f'(s)^2 ds, \quad f \in \mathcal{H}^1(0, t)$$

we obtain

$$\int_{x_i}^{\xi_i} |\partial_x \tilde{v}(x, y)|^2 dx \geq \frac{h_i^2}{l}, \quad 0 \leq y \leq w$$

implying

$$\|\nabla v\|^2 \geq \|\nabla \tilde{v}\|^2 \geq \int_0^w \int_{x_i}^{\xi_i} |\partial_x \tilde{v}(x, y)|^2 dx dy \geq \int_0^w \frac{h_i^2}{l} dy \geq wh_i^2 l^{-1}$$

so that  $h_i^2 \leq C_0 l/w$ , and (1.3) follows.

Now let  $\phi = \phi(x, y)$  be the (affine) linear function on  $P_w$  which makes

$$(\tilde{v} - \phi)(\xi_i, y) = 0, \quad i = 1, 2, \quad 0 \leq y \leq w.$$

By (1.3) (and since the length of  $P_w$  is held fixed), we have

$$\|\phi\|_1^2 = O(w^{1/2}), \quad w \rightarrow 0. \tag{1.4}$$

As  $\tilde{v} - \phi$  belongs to the form domain  $\mathcal{Q}(-\Delta_{DN}^P)$  and satisfies

$$|\langle \tilde{v} - \phi, \psi_j \rangle| \leq 2\varepsilon \quad j = 1, \dots, k, \quad 0 < w < w'_\varepsilon$$

(by (ii) and (1.2)), we obtain

$$\|\nabla(\tilde{v} - \phi) \upharpoonright P_w\|^2 \geq \mu_{k+1}(\|(\tilde{v} - \phi) \upharpoonright P_w\|^2 - 4k\varepsilon^2)$$

for  $0 < w < w'_\epsilon$ . Using (1.1) and (1.4), it finally follows that

$$\begin{aligned} \|\nabla v \upharpoonright P_w\|^2 &\geq \|\nabla \tilde{v} \upharpoonright P_w\|^2 \geq \|\nabla(\tilde{v} - \phi) \upharpoonright P_w\|^2 - \epsilon \\ &\geq \mu_{k+1}(\|(\tilde{v} - \phi) \upharpoonright P_w\|^2 - 4\epsilon) - \epsilon \\ &\geq \mu_{k+1} \|v \upharpoonright P_w\|^2 + O(\epsilon) \end{aligned}$$

for  $0 < w < w''_\epsilon$ , and we are done.

Q.E.D.

We now consider two domains  $\Omega_1$  and  $\Omega_2$  in  $\mathbf{R}^2$ ,  $\Omega_1 \cap \Omega_2 = \emptyset$ , with piecewise smooth boundaries and  $(-\Delta_N^{\Omega_q} + 1)^{-1}$  compact, joined with a passage  $P_w = (0, L) \times (-w, w)$ , as shown in Fig. 3. Note that we prefer  $P_w$  to be symmetric with respect to the  $x$ -axis, in this context. We require our domains  $\Omega_1$  and  $\Omega_2$  to satisfy the following two conditions:

1.  $P_s \cap (\Omega_1 \cup \Omega_2) = \emptyset$
2.  $(-s, 0) \times (-s, s) \subset \Omega_1$  and  $(L, L+s) \times (-s, s) \subset \Omega_2$ ,

for some  $s > 0$ . We require conditions 1 and 2 because it simplifies notation, and because they are satisfied by the examples we try to understand. They could be relaxed to require only that the boundary of the domains be smooth (with non-zero  $x$ -derivative) around the points where the passage is attached, and that  $\partial\Omega_q$  intersects the line segment  $[0, L] \times \{0\}$  only once, for  $q = 1, 2$ .

We define  $P'_w = [0, L] \times (-w, w)$ ,

$$\Omega_w = \Omega_1 \cup P'_w \cup \Omega_2, \quad H_w = -\Delta_N^{\Omega_w}$$

and

$$\tilde{H}_w = -\Delta_N^{\Omega_1} \oplus -\Delta_{DN}^{P_w} \oplus -\Delta_N^{\Omega_2}.$$

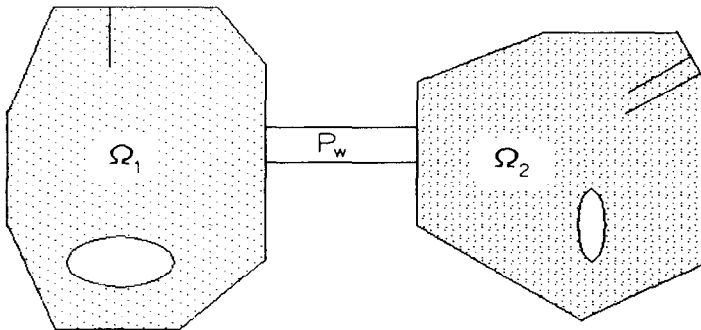


FIG. 3. Two domains joined by a passage.

Let  $\lambda_i = \lambda_i(w)$ , for  $i = 1, 2, \dots$  denote the eigenvalues of  $H_w$ ,

$$0 = \lambda_1 \leq \lambda_2 \leq \dots \leq \lambda_i \leq \dots$$

repeated according to their multiplicities, and let  $\{\varphi_i\}$  denote an associated orthonormal basis of eigenfunctions,  $\varphi_i = \varphi_i(w)$ . Similarly,  $\tilde{\lambda}_i = \tilde{\lambda}_i(w)$ ,  $\tilde{\varphi}_i = \tilde{\varphi}_i(w)$  denote the eigenvalues and eigenfunctions of  $\tilde{H}_w$ . Associated with the  $\tilde{\varphi}_i$  we also consider their extension  $\tilde{\psi}_i \in \mathcal{H}^1(\Omega_w)$ , defined as follows:

1. If  $\tilde{\varphi}_i$  is an eigenfunction of  $-\Delta_{D_N}^w$ , it will be extended as 0 inside  $\Omega_q$ ,  $q = 1, 2$ .

2. In the case where  $\tilde{\varphi}_i$  is an eigenfunction of  $-\Delta_N^{\Omega_1}$ , the Sobolev Extension Theorem (see Gilbarg and Trudinger [10, Theorem 7.25]) allows us to extend  $\tilde{\varphi}_i$  to a domain that contains  $\Omega_1 \cup P_w$ . (Note that in our example, since  $\partial\Omega_1 \cap B_s(0)$  is a straight line, a simple reflection argument would do.) Denote these extensions by  $g_i$  and let  $j(x)$  be a smooth function satisfying  $j(0) = 1$  and  $j(L) = 0$ . We then define

$$\tilde{\psi}_i(x, y) = \begin{cases} g_i(x, y) \cdot j(x) & \text{on } P_w \\ 0 & \text{on } \Omega_2. \end{cases}$$

It is clear, by dominated convergence, that  $\tilde{\psi}_i - \tilde{\varphi}_i$  goes to zero in  $L_2(\Omega_w)$  and that  $\|\tilde{\psi}_i \upharpoonright P_w\|_{\mathcal{H}^1(P_w)} \rightarrow 0$ , as  $w \rightarrow 0$ .

The eigenfunctions of  $-\Delta_N^{\Omega_2}$  are dealt with in the same way.

It is our aim to show that the differences of eigenvalues  $\lambda_i(w) - \tilde{\lambda}_i(w)$  (and eigenfunctions  $\varphi_i(w) - \tilde{\varphi}_i$ ) go to zero as  $w \rightarrow 0$ . To avoid notational difficulties in the case of degenerate eigenvalues, we consider the spectral families  $\{E_\lambda\}_{\lambda \in \mathbf{R}}$  and  $\{\tilde{E}_\lambda\}_{\lambda \in \mathbf{R}}$  for  $H_w$  and  $\tilde{H}_w$  and prove the following:

**PROPOSITION 1.4.** *Suppose the above assumptions are satisfied, and let  $A > 0$  and  $\varepsilon > 0$  be given. Then there exists  $w_\varepsilon$  such that*

$$\|E_\lambda(w) - \tilde{E}_\lambda(w)\| < \varepsilon, \quad 0 < w < w_\varepsilon$$

for all  $\lambda < A$  satisfying  $\text{dist}(\lambda, \sigma(\tilde{H}_w)) \geq \varepsilon$ .

*Proof.* Let  $0 = \tilde{\mu}_1 < \tilde{\mu}_2 < \dots < \tilde{\mu}_k < \dots$  denote the points of  $\sigma(\tilde{H}_w)$  and let  $k_0 \in \mathbf{N}$  be such that  $\tilde{\mu}_{k_0} \leq A$ , and  $\tilde{\mu}_{k_0+1} > A$ . Note first that for  $w$  small enough,  $\tilde{\mu}_k < A + 1$  and  $\tilde{\lambda}_i \leq A + 1$  are independent of  $w$ .<sup>1</sup> Without loss of generality, we may assume that  $|A - \tilde{\mu}_{k_0}| > \varepsilon$ ,  $|A - \tilde{\mu}_{k_0+1}| > \varepsilon$ , and that  $\varepsilon$  is small enough so that the  $2\varepsilon$ -balls around the points  $\tilde{\mu}_1, \dots, \tilde{\mu}_{k_0}$  do not intersect.

<sup>1</sup> Although this is not essential for the proof, it slightly simplifies the picture.

(A) In this part of the proof we show that, for  $\lambda \leq \Lambda$ ,

- (i)  $\dim \mathcal{R}(E_{\lambda+\varepsilon-0}) \geq \dim \mathcal{R}(\tilde{E}_\lambda)$ ;
- (ii)  $\dim \mathcal{R}(E_{\lambda-\varepsilon}) \leq \dim \mathcal{R}(\tilde{E}_\lambda)$ ;

for  $w$  small (here  $\mathcal{R}(\tilde{E}_\lambda)$  denotes the range of  $\tilde{E}_\lambda$ ).

Suppose  $\tilde{\lambda}_1 \leq \dots \leq \tilde{\lambda}_p \leq \lambda$ , while  $\tilde{\lambda}_{p+1} > \lambda$ , so that  $\mathcal{R}(\tilde{E}_\lambda)$  is spanned by  $\tilde{\varphi}_1, \dots, \tilde{\varphi}_p$ . Defining

$$\tilde{M} = \text{span}\{\tilde{\psi}_1, \dots, \tilde{\psi}_p\},$$

where the  $\tilde{\psi}_i$  are the extensions to all of  $\Omega_w$  of the functions  $\tilde{\varphi}_i$ , we clearly have (for  $w$  sufficiently small)

$$\|\nabla\psi\|^2 \leq (\tilde{\lambda}_p + \varepsilon/2) \|\psi\|^2, \quad \psi \in \tilde{M}$$

and

$$\dim \tilde{M} = \dim \mathcal{R}(\tilde{E}_\lambda) = p.$$

Since  $\tilde{M}$  is contained in the form-domain of  $H_w$ , min-max implies that  $H_w$  has at least  $p$  eigenvalues below  $\lambda + \varepsilon$ , proving (i).

If (ii) were not true, we could find  $u \in \mathcal{R}(E_{\lambda-\varepsilon})$ ,  $\|u\| = 1$ ,  $u$  orthogonal to the range of  $\tilde{E}_\lambda$ , whence

$$\langle u, \tilde{\varphi}_i \rangle = 0, \quad i = 1, \dots, p. \tag{1.5}$$

Although  $u$  will not in general belong to the form domain of  $\tilde{H}_w$ , we nevertheless conclude from (1.5) that

$$\|\nabla u \upharpoonright \Omega_1\|^2 \geq \tilde{\lambda}_{p+1} \|u \upharpoonright \Omega_1\|^2$$

and similarly for  $\Omega_2$ , while combining Lemmas 1.2 and 1.3 yields an estimate

$$\|\nabla u \upharpoonright P_w\|^2 \geq \tilde{\lambda}_{p+1} \|u \upharpoonright P_w\|^2 - \varepsilon/2$$

for  $w$  small; we therefore end up with

$$\|\nabla u\|^2 \geq \tilde{\lambda}_{p+1} \|u\|^2 - \varepsilon/2 \tag{1.6}$$

for  $w$  small.

On the other hand,  $u \in \mathcal{R}(E_{\lambda-\varepsilon})$  implies  $\|\nabla u\|^2 \leq (\lambda - \varepsilon) \|Uu\|^2$ , in contradiction with (1.6) and  $\tilde{\lambda}_{p+1} > \lambda$ . This proves (ii).

(B) Denote the points where the  $\varepsilon$ -balls around the  $\tilde{\mu}_k$ ,  $1 \leq k \leq k_0$ , intersect the real line by  $x_1 < \dots < x_j < \dots < x_{2k_0}$ , so that  $x_{2k} = \tilde{\mu}_k + \varepsilon$ ,  $x_{2k-1} = \tilde{\mu}_k - \varepsilon$ , and let  $x_0 = -\infty$ . Defining

$$\mathcal{P}_j = E_{x_j} - E_{x_{j-1}} \quad \tilde{\mathcal{P}}_j = \tilde{E}_{x_j} - \tilde{E}_{x_{j-1}},$$

it is evident that  $\mathcal{P}_1 = \tilde{\mathcal{P}}_1 = 0$  (as  $x_1 = -\varepsilon$  and  $x_0 = -\infty$ ), and that  $\tilde{\mathcal{P}}_j = 0$  for  $j$  odd. Applying (i) and (ii) successively at the points  $x_j$ , it is easy to see that all eigenvalues of  $H_w$  in  $[0, A]$  lie inside the intervals  $(\tilde{\mu}_k - \varepsilon, \tilde{\mu}_k + \varepsilon)$ ,  $k = 1, \dots, k_0$ ; furthermore, if  $\mu \in \sigma(\tilde{H}_w)$ ,  $\mu \leq A$ , is an eigenvalue of multiplicity  $m$ , then there are precisely  $m$  eigenvalues of  $H_w$  inside the  $2\varepsilon$ -interval centered at this  $\mu$ , counting multiplicity.

(C) Finally, we are in a position to prove that, for  $w$  small,

$$\|\mathcal{P}_j - \tilde{\mathcal{P}}_j\| < \varepsilon, \quad 1 \leq j \leq 2k_0.$$

There is nothing to be proven for  $j = 1$ , and we assume now that the assertion holds for  $1, \dots, j - 1 < 2k_0$ . By part (B) of our proof, we have

$$\dim \mathcal{R}(\mathcal{P}_j) = \dim \mathcal{R}(\tilde{\mathcal{P}}_j). \tag{1.7}$$

If  $j$  is odd, then  $\tilde{\mathcal{P}}_j = 0$  and also  $\mathcal{P}_j = 0$ , by (1.7), and we are done.

If  $j$  is even, let  $m = \dim \mathcal{R}(\tilde{\mathcal{P}}_j)$  and suppose that  $\tilde{\lambda}_p = \dots = \lambda_{p+m-1}$  are in the interval  $(x_{j-1}, x_j)$ , so that  $\lambda_p, \dots, \lambda_{p+m-1}$  lie in the interval  $(x_{j-1}, x_j)$  while  $\lambda_{p+m} \geq \tilde{\lambda}_{p+m} - \varepsilon$ , by part (B). Then

$$\tilde{\lambda}_p = \|\nabla \tilde{\varphi}_p\|^2 = \|\nabla \tilde{\psi}_p\|^2 + o(1), \quad w \rightarrow 0,$$

where (noting that  $\tilde{\psi}_p \in \mathcal{H}^1(\Omega_w) = \mathcal{D}(H_w^{1/2})$ )

$$\|\nabla \tilde{\psi}_p\|^2 = \|H_w^{1/2} \tilde{\psi}_p\|^2 = \int_{-\infty}^{\infty} \lambda d \|E_\lambda \tilde{\psi}_p\|^2.$$

By the induction hypothesis, we know that  $\|E_{x_{j-1}} \tilde{\psi}_p\|^2 \rightarrow 0$ , as  $w \rightarrow 0$ , and it follows that

$$\tilde{\lambda}_p \geq \lambda_p \|\mathcal{P}_j \tilde{\psi}_p\|^2 + \lambda_{p+m} \|(1 - E_{x_j}) \tilde{\psi}_p\|^2 + o(1).$$

Letting

$$d = \min\{|\tilde{\mu}_k - \tilde{\mu}_l| \mid 1 \leq k, l \leq k_0, k \neq l\}$$

so that  $\lambda_{p+m} \geq \lambda_p + d - 2\varepsilon$ , we may conclude that

$$\begin{aligned} (d - 2\varepsilon) \|(1 - E_{x_j}) \tilde{\psi}_p\|^2 \\ \leq \lambda_p + \varepsilon - \lambda_p \|(1 - E_{x_{j-1}}) \tilde{\psi}_p\|^2 + o(1) \leq \varepsilon - o(1), \quad w \rightarrow 0 \end{aligned}$$

as  $\|(1 - E_{x_{j-1}}) \tilde{\psi}_p\|^2 = 1 + o(1)$ . This implies  $\|\tilde{\varphi}_p - \mathcal{P}_j \tilde{\varphi}_p\|^2 \leq 2\varepsilon/d + o(1)$ , as  $w \rightarrow 0$ , since  $\varepsilon \leq d/4$ . Repeating the same argument for the eigenfunctions  $\tilde{\varphi}_{p+1}, \dots, \tilde{\varphi}_{p+m-1}$  and using (1.7), it is easy to see that  $\|\mathcal{P}_j - \tilde{\mathcal{P}}_j\| < \varepsilon$  for  $w$  small enough. Q.E.D.

Using Proposition 1.4, it is now straightforward to estimate the difference of the resolvents of  $H_w$  and  $\tilde{H}_w$ .

**PROPOSITION 1.5.** *Let  $H_w$  and  $\tilde{H}_w$  as before, and assume that  $(-\Delta_N^{\Omega_q} + 1)^{-m} \in \mathcal{B}_1$ , the trace class, for  $q = 1, 2$  and for some  $m > 1$ . Then*

$$\|(H_w + 1)^{-1} - (\tilde{H}_w + 1)^{-1}\| \rightarrow 0, \quad w \rightarrow 0$$

and

$$\|(H_w + 1)^{-m} - (\tilde{H}_w + 1)^{-m}\|_{\mathcal{B}_1} \rightarrow 0, \quad w \rightarrow 0,$$

where  $\|\cdot\|_{\mathcal{B}_1}$  denotes the trace norm.

*Proof.* As in the proof of Proposition 1.4, let  $0 = \tilde{\mu}_1 < \tilde{\mu}_2 < \dots$  denote the points of  $\sigma(\tilde{H}_w)$  and let  $\lambda_i^*(w)$  denote the (repeated) eigenvalues of  $-\Delta_N^{\Omega_1} \oplus -\Delta_N^{P_N} \oplus -\Delta_N^{\Omega_2}$ . By assumption,  $(-\Delta_N^{\Omega_q} + 1)^{-m} \in \mathcal{B}_1$ , and, by inspection,  $(-\Delta_N^{P_N} + 1)^{-m} \in \mathcal{B}_1$ . Since the eigenvalues of  $-\Delta_N^{P_N}$  are monotonically non-decreasing, as  $w \rightarrow 0$ , and since  $\lambda_i(w) \geq \lambda_i^*(w)$ ,  $\tilde{\lambda}_i(w) \geq \lambda_i^*(w)$ , it follows that for  $\varepsilon' > 0$  given, there exists  $A > 0$  such that  $1/A < \varepsilon'$  and

$$\sum_{\lambda_i > A} (\lambda_i(w) + 1)^{-m} + \sum_{\tilde{\lambda}_i > A} (\tilde{\lambda}_i(w) + 1)^{-m} < \varepsilon' \tag{1.8}$$

for  $0 < w \leq s$ . Now let  $w_{\varepsilon'} > 0$  so small that the  $\tilde{\lambda}_i(w) \in [0, A + 1]$  are independent of  $w$ , for  $0 < w \leq w_{\varepsilon'}$ , and suppose that  $p \in \mathbb{N}$  is such that  $\tilde{\lambda}_p(w) \leq A$ , while  $\tilde{\lambda}_{p+1} > A$ , for  $0 < w \leq w_{\varepsilon'}$ . Finally, let  $K \in \mathbb{N}$  be such that  $\tilde{\mu}_{k-1} < A$ , while  $\tilde{\mu}_K > A$ . Let  $0 < \varepsilon \leq \varepsilon'$  be such that the  $2\varepsilon$ -intervals around the points  $\tilde{\mu}_k$ ,  $k = 1, \dots, K$ , do not intersect, and let  $x_{2k} = \tilde{\mu}_k + \varepsilon$ ,  $x_{2k-1} = \tilde{\mu}_k - \varepsilon$ ,  $\mathcal{P}_j = E_{x_j} - E_{x_{j-1}}$ ,  $\tilde{\mathcal{P}}_j = \tilde{E}_{x_j} - \tilde{E}_{x_{j-1}}$ ,  $j = 1, \dots, 2K$ , as before.

For the first statement

$$\begin{aligned} \|(H_w + 1)^{-1} - (\tilde{H}_w + 1)^{-1}\| &\leq \sum_{j=1}^{2K} \|\mathcal{P}_j(H_w + 1)^{-1} - \tilde{\mathcal{P}}_j(\tilde{H}_w + 1)^{-1}\| \\ &+ \|(1 - E_{x_{2K}})(H_w + 1)^{-1}\| + \|(1 - \tilde{E}_{x_{2K}})(\tilde{H}_w + 1)^{-1}\|. \end{aligned}$$

Here the last two terms are bounded by  $2A^{-1} < 2\varepsilon'$ . In the sum, the contributions coming from  $j$  odd are zero. For  $j$  even,  $j = 2k$ , say, note that  $(x_{j-1}, x_j) = (\tilde{\mu}_k - \varepsilon, \tilde{\mu}_k + \varepsilon)$ , so

$$\tilde{\mathcal{P}}_j(\tilde{H}_w + 1)^{-1} = (\tilde{\mu}_k + 1)^{-1} \tilde{\mathcal{P}}_j$$

and

$$\|\mathcal{P}_j(H_w + 1)^{-1} - (\tilde{\mu}_k + 1)^{-1} \mathcal{P}_j\| \leq \varepsilon/(1 - \varepsilon)$$

so that ( $\varepsilon \leq 1/2$ , without restriction)

$$\|\mathcal{P}_j(H_w + 1)^{-1} - \tilde{\mathcal{P}}_j(\tilde{H}_w + 1)^{-1}\| \leq \|\mathcal{P}_j - \tilde{\mathcal{P}}_j\| + 2\varepsilon.$$

Using Proposition 1.4, it is now easy to obtain the first statement. For the second statement, we proceed in a similar way:

$$\begin{aligned} \|(H_w + 1)^{-m} - (\tilde{H}_w + 1)^{-m}\|_{\mathcal{H}_1} &\leq \sum_{j=1}^{2K} \|\mathcal{P}_j(H_w + 1)^{-m} - \tilde{\mathcal{P}}_j(\tilde{H}_w + 1)^{-m}\|_{\mathcal{H}_1} \\ &+ \|(1 - E_{x_{2K}})(H_w + 1)^{-m}\|_{\mathcal{H}_1} + \|(1 - \tilde{E}_{x_{2K}})(\tilde{H}_w + 1)^{-m}\|_{\mathcal{H}_1}. \end{aligned}$$

Here the last two terms are less than  $\varepsilon'$ , by (1.8). In the sum, we again have to consider  $j$  even only, where we now estimate

$$\begin{aligned} &\|\mathcal{P}_j(H_w + 1)^{-m} - \tilde{\mathcal{P}}_j(\tilde{H}_w + 1)^{-m}\|_{\mathcal{H}_1} \\ &\leq \|\mathcal{P}_j - \tilde{\mathcal{P}}_j\|_{\mathcal{H}_1} + 2\varepsilon \|\mathcal{P}_j\|_{\mathcal{H}_1} \leq 2 \dim \mathcal{R}(\mathcal{P}_j) \|\mathcal{P}_j - \tilde{\mathcal{P}}_j\| + 2\varepsilon \dim \mathcal{R}(\mathcal{P}_j) \\ &\leq 2p \|\mathcal{P}_j - \tilde{\mathcal{P}}_j\| + 2\varepsilon p \leq 4\varepsilon p \end{aligned}$$

for  $w$  small, by Proposition 1.4, and the result follows.

Q.E.D.

On the intervals of length  $w$ , where the passage  $P_w$  meets the rooms  $\Omega_q$ , the decoupled operator  $\tilde{H}_w$  has Neumann boundary conditions from the side of the rooms and Dirichlet boundary conditions from the side of the passage. As we will see now, we might as well decouple with a *pure* Dirichlet boundary condition on these intervals. In view of later applications, we consider the Neumann Laplacian on a domain  $\Omega$  and investigate the influence of a Dirichlet boundary condition on the interval

$$I_\delta = [0, \delta] \times \{0\} \subset \mathbf{R}^2, \quad \delta \geq 0;$$

note that we do *not* require  $I_\delta \subset \partial\Omega$ . We have:

**PROPOSITION 1.6.** *Suppose  $\Omega$  is an open subset of  $\mathbf{R}^2$  with  $(-\Delta_N^\Omega + 1)^{-1}$  compact. Let  $-\Delta_{D_\delta N}^\Omega$  denote the Laplacian on  $\Omega - I_\delta$ , with Dirichlet boundary condition on  $I_\delta$ , and Neumann boundary conditions on the remaining portions of  $\partial\Omega$ . Then, given  $\varepsilon > 0$ , there exists  $\delta_\varepsilon > 0$  such that*

$$\|(-\Delta_{D_\delta N}^\Omega + 1)^{-1} - (-\Delta_N^\Omega + 1)^{-1}\| < \varepsilon, \quad 0 < \delta \leq \delta_\varepsilon.$$

*Proof.* Suppose we associate the objects  $\lambda_i, \varphi_i, \mu_k, E_\lambda$  with the operator  $-\Delta_N^\Omega$ , and  $\tilde{\lambda}_i$ , etc., with  $-\Delta_{D_\delta N}^\Omega$ , as in the proof of Proposition 1.4. While the basic strategy of proof is the same as the one leading to Propositions 1.4 and 1.5, we now use the  $\mu_k$ 's instead of the  $\tilde{\mu}_k$ 's as reference points, the  $\mu_k$  being independent of  $\delta$ . Furthermore, there are substantial

simplifications in the details; in fact, we shall need neither Lemma 1.3 nor the extension process  $\tilde{\varphi}_i \mapsto \tilde{\psi}_i$ . In particular, the estimate

$$\dim \mathcal{R}(E_\lambda) \geq \dim \mathcal{R}(\tilde{E}_\lambda), \quad \lambda \in \mathbf{R} \tag{i}$$

is now an immediate consequence of the fact that  $-A_N^\Omega \leq -A_{D_\delta N}^\Omega$ , in the sense of quadratic forms. Let  $\varepsilon > 0$ . To obtain the estimate

$$\dim \mathcal{R}(E_\lambda) \leq \dim \mathcal{R}(\tilde{E}_{\lambda+\varepsilon}), \quad \lambda \leq A \tag{ii}$$

for  $\delta$  small, suppose that  $\varphi_1, \dots, \varphi_p$  span  $\mathcal{R}(E_\lambda)$ . Applying Lemma 1.7, below, to  $\varphi_1, \dots, \varphi_p$ , we obtain functions  $\psi_1, \dots, \psi_p \in \mathcal{Q}(-A_{D_\delta N}^\Omega)$  which satisfy

$$\|\varphi_i - \psi_i\|_1 \rightarrow 0, \quad \delta \rightarrow 0.$$

Letting  $M = \text{span}\{\psi_1, \dots, \psi_p\}$ , we again see that  $\dim M = p$  and that

$$\|\nabla u\|^2 \leq (\lambda + \varepsilon) \|u\|^2, \quad u \in M$$

for  $\delta$  sufficiently small, and (ii) follows. This corresponds to part (A) of the proof of Proposition 1.4. Applying the above estimates successively to the points  $\mu_k \pm \varepsilon$ , we see that the eigenvalues of  $-A_{D_\delta N}^\Omega$  lie in the  $\varepsilon$ -neighborhood of the eigenvalues of  $-A_N^\Omega$ . The argument given in part (C) of the proof of Proposition 1.4 is slightly simplified as  $\tilde{\varphi}_p \in \mathcal{Q}(-A_N^\Omega)$ , so that the proof can start from

$$\tilde{\lambda}_p = \|\nabla \tilde{\varphi}_p\|^2 = \int \lambda d \|E_\lambda \tilde{\varphi}_p\|^2.$$

The rest of the arguments used in proving Propositions 1.4 and 1.5 remains basically unchanged. Q.E.D.

LEMMA 1.7. *Let  $\Omega \subset \mathbf{R}^2$  open and  $u \in \mathcal{H}^1(\Omega)$ . Then, there exists a sequence  $\{u_n\} \subset \mathcal{H}^1(\Omega)$  such that  $u_n$  vanishes on the ball of radius  $1/n$ , centered at the origin, and  $\|u - u_n\|_1 \rightarrow 0$  as  $n \rightarrow \infty$ .*

*Proof.* For  $\varepsilon > 0$  given, there exists  $M > 0$  such that the function  $u_M \in \mathcal{H}^1(\Omega)$  given by

$$u_M(x, y) = \begin{cases} u(x, y) & \text{if } |u(x, y)| \leq M \\ |u(x, y)| & \text{otherwise} \end{cases}$$

satisfies  $u_M \in \mathcal{H}_1^1(\Omega)$  and  $\|u - u_M\|_1 < \varepsilon$ . (This follows easily from the chain



rule (Gilbarg and Trudinger [10, Theorem 7.8]) via dominated convergence.)

Now, let  $\varphi \in C^\infty(\mathbf{R}^2)$  enjoy the properties  $0 \leq \varphi \leq 1$ ,  $\varphi(x, y) = 1$  if  $x^2 + y^2 \geq 4$ , and  $\varphi(x, y) = 0$  for  $x^2 + y^2 \leq 1$ . Also, define

$$\varphi_k(x, y) = \varphi(kx, ky), \quad k \in \mathbf{N}.$$

From

$$\|u_M - \varphi_k u_M\| \rightarrow 0, \quad k \rightarrow \infty$$

and  $\|\nabla(\varphi_k u_M)\| \leq \text{const.}$ , it follows that there exists a sequence  $\{k_j\} \subset \mathbf{N}$  such that  $\varphi_{k_j} u_M \rightarrow u_M$  weakly in  $\mathcal{H}^1(\Omega)$ . Therefore, the Banach-Saks theorem implies that

$$\frac{1}{N} \sum_{j=1}^N \varphi_{k_j} u_M \rightarrow u_M, \quad \text{strongly in } \mathcal{H}^1(\Omega)$$

as  $N \rightarrow \infty$ , and the result follows.

Q.E.D.

This concludes the preparations needed for Section 2. We note at this point, that our proofs can be easily modified to obtain results similar to Propositions 1.4–1.6 in dimensions  $n > 1$  (the condition  $m > 1$  in Proposition 1.5 then must be replaced with  $m > n/2$ ).

For the construction of various combs in Section 3, we shall need variants of Lemma 1.3 and Propositions 1.4 and 1.5 adapted to the situation where a thin “tooth” or handle is attached to a given domain. In view of Theorem 3.7, we will allow for the handles to be slightly more general than mere rectangles.

We begin with a variant of Lemma 1.3, dealing with a family of handles  $D_w$ ,  $0 < w \leq w_0 \leq 1$ , which are of the following type: for  $0 < w \leq w_0$ , each  $D_w$  is a bounded, open, connected subset of the right half plane in  $\mathbf{R}^2$ , satisfying

$$D_w \cap \{(x, y) \in \mathbf{R}^2 \mid 0 < x < \sqrt{w}\} = (0, \sqrt{w}) \times (0, w), \quad 0 < w \leq w_0. \quad (1.9)$$

(This means that  $D_w$  begins with an actual rectangular handle on the left-hand side.) Letting  $-\Delta_{D_w}^{D_N}$  denote the Laplacian on  $D_w$  with Dirichlet boundary conditions on  $\{0\} \times [0, w]$  and Neumann boundary conditions everywhere else, we require that  $(-\Delta_{D_w}^{D_N} + 1)^{-1}$  is compact.

Also, let  $0 < \mu_1 \leq \dots \leq \mu_j \leq \dots$  denote the (repeated) eigenvalues of  $-\Delta_{D_w}^{D_N}$ , with associated normalized eigenfunctions  $\psi_j$ ,  $j = 1, 2, \dots$ . Finally, we need the adjoining rectangles  $S_w = (-\sqrt{w}, 0] \times (0, w)$ .

With the above notation and assumptions we have the following lemma.

LEMMA 1.8. *Let  $k \in \mathbf{N}_0$ ,  $w_0 > 0$ , and suppose we are given a family  $\{v_w\}_{0 < w \leq w_0}$ , with  $v_w \in \mathcal{H}^1(D_w \cup S_w)$  satisfying the following conditions:*

- (i)  $\|v_w\|_{\mathcal{H}^1(D_w \cup S_w)} \leq C$  for  $0 < w \leq w_0$  and some constant  $C$ .
- (ii)  $\langle \psi_j, v_w \rangle \rightarrow 0$ , as  $w \rightarrow 0$ , for  $j = 1, \dots, k$ .
- (iii)  $|\int_{S_w} v_w| \leq Aw^{5/4}$ , for some constant  $A$  and  $0 < w \leq w_0$ .

Then, for any  $\varepsilon > 0$  there exists  $w_\varepsilon$  such that

$$\|\nabla v_w \upharpoonright D_w\|^2 \geq \mu_{k+1} \|v_w \upharpoonright D_w\|^2 - \varepsilon, \quad 0 < w \leq w_\varepsilon.$$

*Proof.* The simple averaging used in the proof of Lemma 1.3 has to be refined. We write  $v = v_w$ ,  $l = \sqrt{w}$ , and use the notation

$$h_w = (-l, l) \times (0, w) \subset \mathbf{R}^2$$

$$e_{p,q}(x, y) = c_{p,q} \cos \frac{\pi p(x+l)}{2l} \cos \frac{\pi qy}{w}, \quad (x, y) \in h_w$$

for  $p, q \in \mathbf{N}_0$  and suitable normalizing constants  $c_{p,q}$ ; also, put  $\hat{v}_{p,q} = \langle v, e_{p,q} \rangle$ . Writing

$$U_0 = \sum_{\substack{p \in \mathbf{N}_0 \\ q=0}} \hat{v}_{p,q} e_{p,q}, \quad U_1 = v \upharpoonright h_w - U_0 = \sum_{\substack{p \in \mathbf{N}_0 \\ q \in \mathbf{N}}} \hat{v}_{p,q} e_{p,q},$$

we now define, for  $(x, y) \in D_w$

$$\tilde{v}(x, y) = \begin{cases} v(x, y), & x \geq \sqrt{w} \\ U_0(x, y) + \phi_w(x) U_1(x, y), & -\sqrt{w} \leq x \leq \sqrt{w}, \end{cases}$$

where  $\phi_w(x) \in C^\infty(\mathbf{R})$  is such that  $\phi_w(x) = 1$  for  $x \geq \sqrt{w}$ ,  $\phi_w(x) = 0$  for  $x \leq 0$ ,  $0 \leq \phi_w \leq 1$ , and  $\max |\phi'_w| \leq 2w^{-1/2}$ .

As in the proof of Lemma 1.3, the assumption  $\|\nabla v\|^2 \leq C$  implies  $\|U_1\|^2 = O(w^2)$  for  $w$  small, so that  $\|v - \tilde{v}\| \rightarrow 0$ . To estimate  $\|\nabla \tilde{v}\|^2$ , we first observe that  $\partial_y U_0 = 0$ , so that

$$\int_{h_w} |\partial_y \tilde{v}|^2 \leq \int_{h_w} |\phi_w|^2 |\partial_y U_1|^2 \leq \int_{h_w} |\partial_y v|^2.$$

On the other hand, looking at the  $x$ -derivative  $\partial_x \tilde{v} = \partial_x U_0 + \phi'_w(x) U_1 + \phi_w(x) \partial_x U_1$ , we first note that

$$\int_{h_w} |\phi'_w(x)|^2 |U_1|^2 \leq \max |\phi'_w|^2 \|U_1\|^2 \leq Cw^{-1}w^2.$$

Furthermore, as  $q = 0$  in  $U_0$  and  $q \geq 1$  in  $U_1$ , Fibini's theorem implies  $\langle \partial_x U_0, \partial_x U_1 \rangle = 0$  and it follows that

$$\begin{aligned} \int_{h_w} |\partial_x \tilde{v}|^2 &= \int_{h_w} |\partial_x U_0|^2 + \int_{h_w} |\phi_w(x)|^2 |\partial_x U_1|^2 + O(w^{1/2}) \\ &\leq \int_{h_w} |\partial_x v|^2 + O(w^{1/2}). \end{aligned}$$

We therefore conclude that  $\|\nabla \tilde{v}\|^2 \leq \|\nabla v\|^2 + O(w^{1/2})$ . The rest of the proof is similar to the proof of Lemma 1.3; here, however, we will have to subtract from  $\tilde{v}$  a piecewise linear function which is 0 for  $x \geq \sqrt{w}$ . Q.E.D.

We now join handles of the type described above to a fixed domain  $\Omega \subset \mathbb{R}^2$ , where we assume that

$$(-s_0, 0) \times (-s_0, s_0) \subset \Omega$$

for some  $s_0 > 0$ , and

$$\Omega \cap D_w = \emptyset, \quad 0 < w \leq w_0.$$

We will also require

$$D_w \cap \{(x, y) \mid 0 < x < w^{1/4}\} = (0, w^{1/4}) \times (0, w)$$

which implies (1.9), for  $w \leq 1$ .

Now, letting  $\Omega_w = \Omega \cup D'_w$ , where  $D'_w = D_w \cup (\{0\} \times (0, w))$ , we define  $H_w = -\Delta_N^{\Omega_w}$  and  $\tilde{H}_w = -\Delta_N^{\Omega} \oplus -\Delta_{D'_w}^w$ . Also, let  $\lambda_i(w)$ ,  $i = 1, 2, \dots$ , denote the eigenvalues of  $H_w$ , repeated according to multiplicity. We have

**PROPOSITION 1.9.** *In addition to the above assumptions, suppose that  $(-\Delta_N^{\Omega} + 1)^{-2} \in \mathcal{B}_1$  and that, more strongly,*

$$\sum_{i \geq N} (\lambda_i(w) + 1)^{-2} \rightarrow 0, \quad N \rightarrow \infty$$

*uniformly for  $0 < w \leq w_0$ . Finally, assume that, for any  $A > 0$  given, the eigenvalues of  $-\Delta_{D'_w}^w$  in  $[0, A]$  are independent of  $w$ , for  $w$  small enough.*

*Then, as  $w \rightarrow 0$ ,*

$$\|(H_w + 1)^{-1} - (\tilde{H}_w + 1)^{-1}\| \rightarrow 0$$

*and*

$$\|(H_w + 1)^{-2} - (\tilde{H}_w + 1)^{-2}\|_{\mathcal{B}_1} \rightarrow 0.$$

*Proof.* Using Lemma 1.8 in place of Lemma 1.3, we closely follow the strategy of proof which led to Propositions 1.4 and 1.5. Note that  $D_w$  now has a rectangular handle  $(0, w^{1/4}) \times (0, w)$ , so that we can use the old extension and cut-off process to extend the eigenfunctions  $\tilde{\varphi}_i$  of  $\tilde{H}_w$  to functions  $\tilde{\psi}_i$  defined on all of  $\Omega_w$ ,  $\tilde{\psi}_i \in \mathcal{H}^1(\Omega_w)$ , and such that  $\|\tilde{\psi}_i \upharpoonright D_w\|_{\mathcal{H}^1(D_w)} \rightarrow 0$ , as  $w \rightarrow 0$ . Q.E.D.

*Remarks.* (a) The assumption that the eigenvalues of  $-\Delta_{DN}^{D_w}$  in any interval  $[0, A]$  be independent of  $w$ , for  $w$  small, is very restrictive. However, it is easy to see that the proof of Proposition 1.9 can be modified to cover the situation where, for any  $i$ , the eigenvalue  $\tilde{\lambda}_i(w)$  of  $-\Delta_{DN}^{D_w}$  converges to some limit  $\hat{\lambda}_i$ , as  $w \rightarrow 0$ , with  $\hat{\lambda}_i \rightarrow \infty$  as  $i \rightarrow \infty$ .

(b) Some related results on shrinking handles attached to a fixed domain can be found in Courant and Hilbert [5, p. 420] and in Arrieta, Hale, and Han [3].

## 2. ROOMS AND PASSAGES

In Section 1, we considered the Neumann Laplacian on domains consisting of two rooms, joined by a narrow passage. We now analyze the case where an infinite number of rooms are joined by narrow passages and we determine the essential spectrum of the associated Neumann Laplacian. More specific results will be obtained by choosing the rooms to be either rectangles (Corollary 2.2) or rectangles with a partition (Corollaries 2.4 and 2.5). Rooms with partitions are particularly useful in attacking the inverse problem

Given a closed set  $S \subset [0, \infty)$ , does there exist a bounded connected domain  $\Omega \subset \mathbf{R}^2$  such that  $\sigma_{\text{ess}}(-\Delta_N^\Omega) = S$ ? (IP)

We now define the general setting for rooms and passages (cf. Fig. 4).

Suppose we are given two bounded, strictly increasing sequences  $\{x_k\}$ ,  $\{x'_k\} \subset [0, \infty)$  which interlace in the sense that  $x_k < x'_k < x_{k+1}$ , for  $k = 1, 2, \dots$ . We also assume  $x_1 = 0$ , for simplicity. For  $k = 1, 2, \dots$ , let  $R_k \subset \mathbf{R}^2$  be open sets satisfying the following three conditions:

$$(-\Delta_N^{R_k} + 1)^{-2} \text{ is trace class} \tag{2.1}$$

$$R_k \subset \{(x, y) \mid x_k < x < x'_k\} \tag{2.2}$$

$$\partial R_k \cap B_{\varepsilon_k}((x_k, 0)) = \{x_k\} \times (-\varepsilon_k, \varepsilon_k), \tag{2.3}$$

$$\partial R_k \cap B_{\varepsilon_k}((x'_k, 0)) = \{x'_k\} \times (-\varepsilon_k, \varepsilon_k)$$

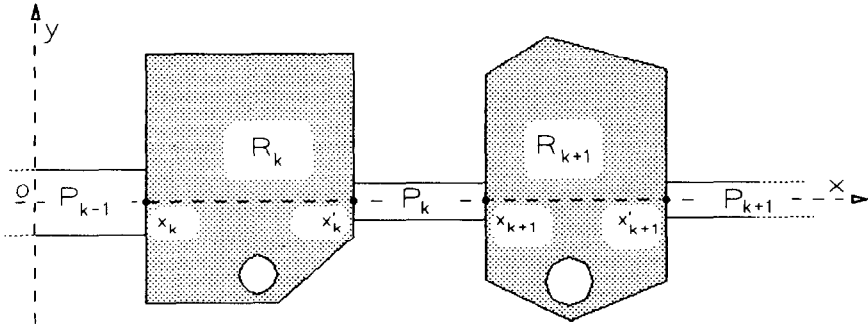


FIG. 4. The construction of rooms and passages.

for some  $\varepsilon_k > 0$ , where  $B_{\varepsilon_k}((x_k, 0))$  denotes the ball of radius  $\varepsilon_k$  centered at the pont  $(x_k, 0)$ . Conditions (2.2) and (2.3) in particular imply that the right half of  $B_{\varepsilon_k}((x_k, 0))$  and the left half of  $B_{\varepsilon_k}((x'_k, 0))$  are contained in  $R_k$ .

We then define the  $k$ th passage, joining  $R_k$  with  $R_{k+1}$ , by

$$P_k = P_k(w_k) = (x'_k, x_{k+1}) \times (-w_k, w_k), \quad 0 < w_k < \min\{\varepsilon_k, \varepsilon_{k+1}\}. \quad (2.4)$$

While the rooms  $R_k$  may be considered as being fixed, the widths  $w_k$  will be determined later on. For a sequence  $\{w_k\}$  satisfying the requirements in (2.4), we now define the rooms and passages domain  $\Omega$  by

$$\Omega = \Omega(\{w_k\}_{k \in \mathbb{N}}) = \bigcup_{k=1}^{\infty} (R_k \cup P'_k), \quad (2.5)$$

where  $P'_k = [x'_k, x_{k+1}] \times (-w_k, w_k)$ . Also, define the domains obtained by joining the first  $n$  rooms

$$\Omega_n = \Omega_n(\{w_k\}_{k=1, \dots, n-1}) = \bigcup_{k=1}^{n-1} (R_k \cup P'_k) \cup R_n \quad (2.6)$$

and the approximating operators

$$H_n = H_n(\{w_k\}_{k \in \mathbb{N}}) = -\Delta_N^{\Omega_n} \oplus \left( \bigoplus_{k=n}^{\infty} (-\Delta_{DN}^{P_k} \oplus -\Delta_N^{R_{k+1}}) \right) \quad (2.7)$$

$$\tilde{H}_n = \tilde{H}_n(\{w_k\}_{k \in \mathbb{N}}) = -\Delta_{DN}^{\Omega_n} \oplus \left( \bigoplus_{k=n}^{\infty} (-\Delta_{DN}^{P_k} \oplus -\Delta_{DN}^{R_{k+1}}) \right). \quad (2.8)$$

Here the boundary conditions for  $-\Delta_{DN}^{P_k}$  are as in Section 1, while the Laplacian  $-\Delta_{DN}^{\Omega_n}$  obeys Dirichlet boundary conditions on the line segment

where the passage  $P_n$  meets  $\Omega_n$ , and Neumann conditions on the remaining parts of the boundary  $\partial\Omega_n$ . Similarly,  $-A_{DN}^{R_k}$  has Dirichlet boundary conditions on the line segments where the passages  $P_{k-1}$  and  $P_k$  are attached, and Neumann boundary conditions on the rest of  $\partial R_k$ . Hence  $\tilde{H}_n$  is the Neumann Laplacian on  $\Omega$ , with all but the first  $n$  rooms and all but the first  $n-1$  passages decoupled by pure Dirichlet boundary conditions. (Note that the meaning of the “ $\sim$ ” differs from Section 1.)

The fundamental result of this section reads as follows.

**THEOREM 2.1.** *Suppose we are given  $R_k \subset \mathbf{R}^2$ ,  $k = 1, 2, \dots$ , satisfying conditions (2.1)–(2.3). Then, there exists a sequence of positive numbers  $w_k$ ,  $w_k \rightarrow 0$  as  $k \rightarrow \infty$ , such that the Neumann Laplacian on  $\Omega = \Omega(\{w_k\})$  enjoys the following properties:*

- (i)  $\sigma_{ac}(-A_N^\Omega) = \emptyset$ .
- (i)  $\sigma_{ess}(-A_N^\Omega) = \sigma_{ess}(\bigoplus_{k=1}^\infty -A_N^{R_k}) = \bigcap_{n \geq 1} (\bigcup_{k \geq n} \sigma(-A_N^{R_k}))^{\text{Closure}}$ .

*Remarks.* (a) Any isolated point of  $\sigma_{ess}(-A_N^\Omega)$  is an eigenvalue of infinite multiplicity or an accumulation point of eigenvalues. In particular, if 0 is an isolated point of  $\sigma_{ess}(-A_N^\Omega)$ , then it is necessarily an accumulation point of eigenvalues.

(b) The result of Theorem 2.1 holds true for all sequences  $\{w_k\}$  which tend to 0 fast enough; cf. Theorem A.1 in the Appendix.

(c) It has been known for some time that rooms and passages examples may have a non-compact embedding of  $\mathcal{H}^1(\Omega)$  into  $L_2(\Omega)$  (cf. Courant and Hilbert [6, p. 521]), in which case the essential spectrum of the Neumann Laplacian cannot be empty. More recently, Amick [2] and Evans and Harris [7, 8] analyzed various fundamental properties of rooms and passages type domains related to Poincaré’s inequality and the measure of non-compactness of the embedding of  $\mathcal{H}^1(\Omega)$  into  $L_2(\Omega)$ ; they also determined the bottom of the essential spectrum in some cases.

*Proof of Theorem 2.1.* (A) We first show that we can find a sequence  $\{w_k\}$  of positive numbers such that

$$\|(H_n + 1)^{-1} - (H_{n+1} + 1)^{-1}\| \leq \frac{1}{n^2} \quad \|(H_n + 1)^{-2} - (H_{n+1} + 1)^{-2}\|_{\mathcal{H}^1} \leq \frac{1}{n^2} \tag{2.9}$$

and

$$\|(H_n + 1)^{-1} - (\tilde{H}_n + 1)^{-1}\| \leq \sum_{k \geq n} \frac{1}{k^2} \tag{2.10}$$

holds, for all  $n = 1, 2, \dots$

To achieve this, we first apply Proposition 1.6 to all the rooms  $R_k$  to obtain a sequence  $\{\bar{w}_k\}$ ,  $\bar{w}_k > 0$ , such that

$$\|(-\Delta_N^{R_k} + 1)^{-1} - (-\Delta_{D_N}^{R_k} + 1)^{-1}\| \leq \frac{1}{k^2} \tag{2.11}$$

provided  $0 < w_k \leq \bar{w}_k$  (recall that  $-\Delta_{D_N}^{R_k}$  obeys Dirichlet boundary conditions on the line segments  $\{x_k\} \times (-w_{k-1}, w_{k-1})$  and on  $\{x'_k\} \times (-w_k, w_k)$ ).

We now proceed by induction. For  $n = 1$ , (2.10) follows directly from (2.11), as  $H_1$  and  $\tilde{H}_1$  are fully decoupled. By Proposition 1.5, we can find  $0 < w_1 \leq \bar{w}_1$ , such that (2.9) holds for  $n = 1$ . (Note that for  $H_1$  as well as for  $H_2$  the rooms  $R_k, k \geq 3$ , are decoupled.) Now suppose that  $0 < w_j \leq \bar{w}_j, j = 1, \dots, n - 1$ , have already been found. We then employ Proposition 1.5 to join  $\Omega_n, P_n$ , and  $R_{n+1}$  together: Again, since the rooms  $R_k, k > n + 1$ , are decoupled for  $H_n$  as well as for  $H_{n+1}$ , in order to control  $(H_n + 1)^{-1} - (H_{n+1} + 1)^{-1}$  it is enough to estimate

$$(-\Delta_N^{\Omega_n} \oplus -\Delta_{D_N}^{P_n(w_n)} \oplus -\Delta_N^{R_{n+1}} + 1)^{-1} - (-\Delta_N^{\Omega_{n+1}} + 1)^{-1}$$

and therefore Proposition 1.5 provides us with a  $0 < w'_n \leq \bar{w}_n$  such that (2.9) holds for  $0 < w_n \leq w'_n$ . Applying also Proposition 1.6 to  $\Omega_n$ , we can find  $0 < w_n \leq w'_n$  such that

$$\|(-\Delta_N^{\Omega_n} + 1)^{-1} - (-\Delta_{D_N}^{\Omega_n} + 1)^{-1}\| \leq \frac{1}{n^2}.$$

(B) Now we fix a sequence  $\{w_n\}$  which meets all the above requirements. Clearly, the form domains  $\mathcal{Q}(\tilde{H}_n) = \mathcal{Q}(\tilde{H}_n^{1/2})$  satisfy

$$\mathcal{Q}(\tilde{H}_n) \subset \mathcal{Q}(\tilde{H}_{n+1}) \subset \mathcal{H}^1(\Omega) = \mathcal{Q}(-\Delta_N^\Omega)$$

for all  $n \in \mathbb{N}$ , and, by Lemma 1.7, they exhaust  $\mathcal{H}^1(\Omega)$  in the sense that

$$\bigcup_{n=N}^\infty \mathcal{Q}(\tilde{H}_n) \text{ is dense in } \mathcal{H}^1(\Omega)$$

for all  $N \in \mathbb{N}$ . Since these quadratic forms are given by  $\|\nabla u\|^2$ , for  $u \in \mathcal{Q}(\tilde{H}_n)$  or  $u \in \mathcal{Q}(-\Delta_N^\Omega)$ , we may conclude that  $\tilde{H}_n \rightarrow -\Delta_N^\Omega$  in the strong resolvent sense, by standard convergence theorems for quadratic forms (cf., e.g., Kato [12, Theorem VIII-3.6 or Theorem VIII-3.11] or Reed and Simon [13, Theorem S.16]).

Combining this result with (2.9) and (2.10), we see that  $H_n \rightarrow -\Delta_N^\Omega$  in the norm resolvent sense, and that

$$(H_1 + 1)^{-2} - (-\Delta_N^\Omega + 1)^{-2} \in \mathcal{B}_1$$

so that  $\sigma_{ac}(-\Delta_N^\Omega) = \sigma_{ac}(H_1)$  by Kato–Birman theory (see, e.g., Reed and Simon [14, p. 30, Corollary 3]) and  $\sigma_{ess}(-\Delta_N^\Omega) = \sigma_{ess}(H_1)$  by a theorem of Weyl and the spectral mapping theorem. Now, since  $H_1$  is the fully decoupled operator, with Neumann boundary conditions in the rooms and Dirichlet–Neumann boundary conditions in the passages, it is clear that  $\sigma_{ac}(H_1) = \emptyset$  and

$$\sigma_{ess}(H_1) = \sigma_{ess}\left(\bigoplus_{k=1}^{\infty} -\Delta_N^{R_k}\right).$$

(Note that the operators  $-\Delta_{D_N}^{P_k}$  cannot contribute to  $\sigma_{ess}(H_1)$  since the bottom of their spectrum goes to  $\infty$ , as  $k \rightarrow \infty$ .) This completes the proof of Theorem 2.1. Q.E.D.

We now consider more specific  $R_k$  and begin with classical rooms and passages where each  $R_k$  is a rectangle. Let

$$R_k = (x_k, x'_k) \times \left(-\frac{1}{2}\eta_k, \frac{1}{2}\eta_k\right) \tag{2.12}$$

for some bounded sequence  $\{\eta_k\}$ ,  $\eta_k > 0$ . As  $|x_k - x'_k| \rightarrow 0$ ,  $k \rightarrow \infty$ , it is easy to see that

$$\sigma_{ess}\left(\bigoplus_{k=1}^{\infty} -\Delta_N^{R_k}\right) = \{0\} \cup \{m^2\pi^2\alpha \mid m \in \mathbf{N}, \alpha \in \Sigma\},$$

where

$$\Sigma = \{\text{limit points of } \{\eta_k^{-2}\}\} \tag{2.13}$$

and we obtain the following result:

**COROLLARY 2.2.** *Suppose the rooms  $R_k$  are given by (2.12), with  $\{\eta_k\}$  a bounded sequence of positive numbers. Let  $\Sigma$  be as in (2.13). Then, there exists a sequence of widths  $\{w_k\}$ ,  $w_k \rightarrow 0$ , such that the Neumann Laplacian on  $\Omega = \Omega(\{w_k\})$  satisfies*

$$\sigma_{ess}(-\Delta_N^\Omega) = \{0\} \cup \pi^2 \bigcup_{m=1}^{\infty} m^2 \Sigma.$$

*Remark.* By Theorem A.1 in the Appendix, Corollary 2.2 can be generalized to hold for all sequences  $\{w_k\}$  which go to zero fast enough. We believe that the result holds true if  $w_k \rightarrow 0$  at some exponential rate while the other quantities behave polynomially.

Corollary 2.2 determines the essential spectrum of the Neumann Laplacian on typical rooms and passages (for very narrow passages).



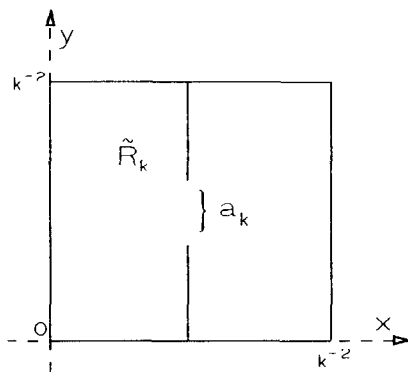


FIG. 5. A room with partition.

However, due to the somewhat special structure of the set  $\bigcup_{m=1}^{\infty} m^2 \Sigma$ , it does not provide a really satisfactory answer to the inverse problem (IP). While the best answer to (IP) will only be obtained by the construction of modified combs in Section 3, we shall now make some progress by replacing each room  $R_k$  by a small square room with a partition leaving open a "door", as shown in Fig. 5.

These "double rooms"  $\tilde{R}_k$  of side length  $k^{-2}$  will be chosen in such a way that  $-\Delta_{\tilde{R}_k}$  has an eigenvalue 0, one low-lying eigenvalue less than  $\pi^2 k^4$  (which can be adjusted by choosing the width  $a_k$  of the "door"), while the remaining eigenvalues are larger than  $\pi^2 k^4$ . In fact, we have the following lemma.

LEMMA 2.3. For  $l > 0$  and  $0 \leq \rho \leq l$ , consider the open set in  $\mathbf{R}^2$

$$Q(l; \rho) = ((-l, 0) \cup (0, l)) \times (-l, l) \cup (\{0\} \times (-\rho, \rho)).$$

Then, for any  $\mu \in (0, \pi^2/4l^2)$ , there exists  $\rho \in (0, l)$  such that the (repeated) eigenvalues  $\lambda_j(\rho)$ ,  $j = 0, 1, 2, \dots$ , of the Neumann Laplacian on  $Q(l; \rho)$  satisfy

$$\lambda_0(\rho) = 0, \quad \lambda_1(\rho) = \mu, \quad \lambda_j(\rho) \geq \frac{\pi^2}{4l^2} \quad (j \geq 2).$$

The proof of this lemma will be given at the end of this section. In the construction of rooms and passages, let us now assume that  $|x'_k - x_k| = k^{-2}$  and that each room  $R_k$  is replaced by  $\tilde{R}_k$ , where  $\tilde{R}_k$  is a square with a partition, leaving open a door of width  $a_k$ , as shown in Fig. 5. We then have:

**COROLLARY 2.4 (Modified Rooms and Passages).** *Let  $\lambda_1(a_k)$  denote the first non-zero eigenvalue of  $- \Delta_N^{\mathbb{R}^k}$ . Then, for suitably chosen widths  $w_k$  of the passages  $P_k$ , the Neumann Laplacian on  $\Omega = \Omega(\{w_k\})$  satisfies*

$$\sigma_{\text{ess}}(-\Delta_N^\Omega) = \{0\} \cup \{\text{accumulation points of } \{\lambda_1(a_k)\}\}.$$

An immediate consequence is the following inverse result:

**COROLLARY 2.5.** *For any closed set  $S \subset [0, \infty)$ , there exists an open, bounded, connected set  $\Omega \subset \mathbf{R}^2$  such that*

$$\sigma_{\text{ess}}(-\Delta_N^\Omega) = \{0\} \cup S.$$

In Section 3 we will construct examples which do not necessarily have 0 in the essential spectrum.

*Proof of Lemma 2.3.* We first exploit the monotonicity of the Sobolev spaces  $\mathcal{H}^1(Q(l; \rho))$  with respect to  $\rho$ ,

$$\mathcal{H}^1(Q(l; \rho')) \subset \mathcal{H}^1(Q(l; \rho)), \quad 0 \leq \rho \leq \rho' \leq l$$

to conclude that  $\lambda_j(\rho) \leq \lambda_j(\rho')$ , for  $j = 0, 1, 2, \dots$  and  $0 \leq \rho \leq \rho' \leq l$ .

For  $\rho = 0$ , we clearly have

$$\lambda_0(0) = \lambda_1(0) = 0, \quad \lambda_2(0) = \frac{\pi^2}{4l^2}$$

so, by monotonicity,

$$\lambda_2(\rho) \geq \lambda_2(0) = \frac{\pi^2}{4l^2}, \quad 0 \leq \rho \leq l.$$

Since  $\lambda_1(0) = 0$  and  $\lambda_1(l) = \pi^2/4l^2$ , the result will follow if we can show that  $\lambda_1(\rho)$  depends continuously on  $\rho \in [0, l]$ .

To prove continuity at 0, we choose a function  $\psi \in C^\infty(\mathbf{R}^2)$ , satisfying

$$\begin{aligned} \psi(x, y) &= 1, & x^2 + y^2 &> 4 \\ \psi(0, y) &= 0, & -1 \leq y \leq 1 \end{aligned}$$

and let

$$\psi_\rho(x, y) = \psi(\rho^{-1}x, \rho^{-1}y), \quad \rho > 0.$$

Letting  $\chi_R$  and  $\chi_L$  denote the characteristic functions of the right and left portion of  $Q(l; 0)$  respectively, we define

$$\tilde{u}_\rho = \psi_\rho \cdot (\chi_R - \chi_L).$$

We have that  $\tilde{u}_\rho$  is orthogonal to the constant functions,  $\tilde{u}_\rho \in \mathcal{H}^1(Q(l; \rho))$ ,  $\|\nabla \tilde{u}_\rho\| \leq \text{const}$ , and  $\tilde{u}_\rho \rightarrow \chi_R - \chi_L$  in  $L^2$ , as  $\rho \rightarrow 0$ . Thus, for a suitable sequence  $\{\rho_j\}$  converging to 0, we have  $\tilde{u}_{\rho_j} \rightarrow \chi_R - \chi_L$  weakly in  $\mathcal{H}^1(Q(l; 0))$ , and the Banach–Saks theorem yields that the averages

$$v_N = \frac{1}{N} \sum_{j=1}^N \tilde{u}_{\rho_j}$$

converge to  $\chi_R - \chi_L$ , strongly in  $\mathcal{H}^1(Q(l; 0))$ . Therefore, given  $\varepsilon > 0$ , we can find a function  $w_\varepsilon$  of norm 1,  $w_\varepsilon \in \mathcal{H}^1(Q(l; \rho))$ , for small  $\rho$ , satisfying

$$\|\nabla w_\varepsilon\| < \varepsilon, \quad \int_{Q(l; \rho)} w_\varepsilon = 0.$$

This proves  $\lambda_1(\rho) < \varepsilon$  for  $\rho$  sufficiently small.

Continuity of  $\lambda_1(\rho)$  in  $0 < \rho \leq l$  follows by monotonicity and a simple dilation argument. Q.E.D.

### 3. COMBS

We now apply the techniques of Sections 1 and 2 to Neumann Laplacians on comb-like domains. Our combs are constructed by attaching an infinite number of thin “teeth” (rectangles) of finite length to a fixed square forming the basis of the comb; each tooth plays the role of one room and one passage simultaneously. In the second part of this section, we shall produce combs with more sophisticated teeth (teeth of shrinking size with partitions, similar to the double rooms in Section 2), which provide a complete answer to the inverse problem (IP) of Section 2. Each of the teeth with partitions will contribute to the spectrum of the decoupled comparison operator precisely one low-lying eigenvalue which again can be adjusted by choosing the opening of the “door,” while the remaining eigenvalues will be very large.

We first describe ordinary combs.

Let the basis (or the “handle”) of the comb be the set  $\Omega_0 = (0, 1) \times (-1, 0) \subset \mathbf{R}^2$  and suppose we are given a bounded sequence  $\{\eta_k\}$  of positive numbers. The  $\eta_k$  give the length of the  $k$ th tooth,  $k = 1, 2, \dots$ . The width  $w_k$  of the  $k$ th tooth will be determined inductively.

Suppose  $\{w_k\}$  is some sequence of positive numbers such that  $\sum w_k < 1$ . We then denote the initial  $x$ -coordinate of the  $k$ th tooth by

$$a_k := \sum_{j=1}^{k-1} w_j, \quad k = 1, 2, \dots \tag{3.1}$$

and the total width occupied by teeth as

$$A = \sum_{k=1}^{\infty} w_k. \tag{3.2}$$

For the  $k$ th tooth, let

$$D_k = (a_k, a_k + w_k) \times (0, \eta_k), \quad D'_k = (a_k, a_k + w_k) \times [0, \eta_k). \tag{3.3}$$

The comb domain is then given by

$$\Omega = \Omega_0 \cup \left( \bigcup_{k=1}^{\infty} D'_k \right), \tag{3.4}$$

while the approximating comb with only the first  $n$  teeth left, is given by

$$\Omega_n = \Omega_0 \cup \left( \bigcup_{k=1}^n D'_k \right). \tag{3.5}$$

As in the rooms and passages example, we will also need two kinds of approximating operators,

$$H_n = -\Delta_{D_N}^{\Omega_n} \oplus \left( \bigoplus_{k>n} -\Delta_{D_N}^{D_k} \right), \quad n \in \mathbf{N}_0 \tag{3.6}$$

and

$$\tilde{H}_n = -\Delta_{D_N}^{\Omega_n} \oplus \left( \bigoplus_{k>n} -\Delta_{D_N}^{D_k} \right), \quad n \in \mathbf{N}_0, \tag{3.7}$$

where the boundary conditions are chosen in the following way:  $-\Delta_{D_N}^{D_k}$  has Dirichlet boundary conditions on the line segment  $[a_k, a_k + w_k] \times \{0\}$  and Neumann boundary conditions on the rest of  $\partial D_k$ ;  $-\Delta_{D_N}^{\Omega_n}$  has Dirichlet conditions on the line segment  $[a_{n+1}, A] \times \{0\}$ , and Neumann boundary conditions on the remaining portions of  $\partial \Omega_n$  (cf. Fig. 6 below). In particular, all the teeth are decoupled from the basis  $\Omega_0$  for the operator  $H_0$ . Similarly, for  $w_1, \dots, w_n$  given,  $-\Delta_{D_N}^{\Omega_n}$  will denote the Laplacian on  $\Omega_n$  with Dirichlet boundary conditions on the line segment  $[a_{n+1}, a_{n+1} + \delta] \times \{0\}$ , for  $0 < \delta < 1 - a_{n+1}$  and Neumann boundary conditions on the rest of  $\partial \Omega_n$ . Note that, for fixed  $\{\eta_k\}$ , the domains and operators defined above will depend on the sequence  $\{w_n\}$ .

**PROPOSITION 3.1.** *Suppose  $w_1, \dots, w_n$  are given, with  $w_k > 0$ , for  $k = 1, \dots, n$ , and  $\sum_{j=1}^n w_j < 1$ . Then there exists  $\tilde{w}_{n+1} > 0$  such that*

$$\|(H_n + 1)^{-1} - (H_{n+1} + 1)^{-1}\| \leq 1/(n + 1)^2, \quad n \geq 0 \tag{3.8}$$

$$\|(H_n + 1)^{-2} - (H_{n+1} + 1)^{-2}\|_{\mathcal{B}_1} \leq 1/(n + 1)^2, \quad n \geq 0 \tag{3.9}$$

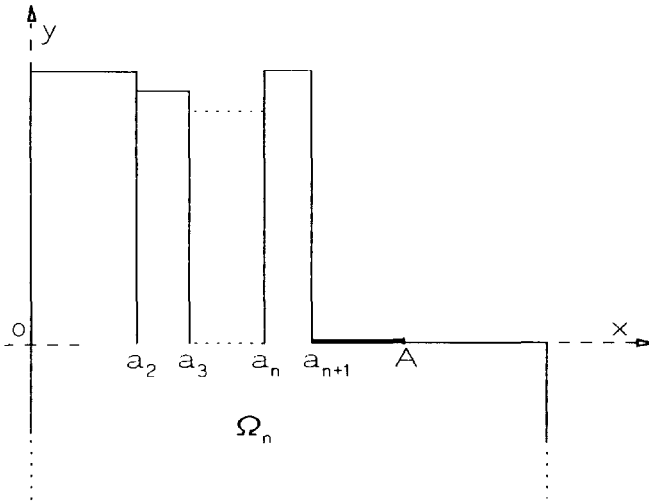


FIG. 6. The line segment  $[a_{n+1}, A] \times \{0\}$  where  $-\Delta_{DN}^{\Omega_n}$  has Dirichlet boundary conditions.

provided  $w_{n+1} \leq \tilde{w}_{n+1}$ , for any choice of  $w_{n+2}, w_{n+3}, \dots$ , but still assuming  $\sum w_k < 1$ .

*Proof.* Since the teeth  $D_{n+2}, D_{n+3}, \dots$  are decoupled for  $H_n$  as well as for  $H_{n+1}$ , it is enough to compare  $(-\Delta_N^{\Omega_n} \oplus -\Delta_{DN}^{D_{n+1}} + 1)^{-1}$  and  $(-\Delta_N^{\Omega_{n+1}} + 1)^{-1}$ , and the result will follow if we can show that the assumptions of Proposition 1.9 are satisfied: Clearly, the small eigenvalues on the teeth are independent of  $w$ , for  $w$  small, while Neumann bracketing yields that  $(-\Delta_N^{\Omega_n} + 1)^{-2}$  is trace class. Q.E.D.

We also have to consider the difference between the resolvent of  $H_n$  and  $\tilde{H}_n$ .

**PROPOSITION 3.2.** *Let  $n \geq 1$  and suppose  $w_1, \dots, w_n$  are given, with  $w_k > 0$ , for  $k = 1, \dots, n$ , and  $\sum w_k < 1$ . Then, there exists  $\delta_n > 0$ , such that*

$$\|(H_n + 1)^{-1} - (\tilde{H}_n + 1)^{-1}\| \leq \frac{1}{n^2} \tag{3.10}$$

for any choice of  $w_{n+1}, w_{n+2}, \dots$ , provided  $\sum_{k > n} w_k < \delta_n$ .

*Proof.* Since the teeth  $D_{n+1}, D_{n+2}, \dots$  are decoupled for  $H_n$  as well as for  $\tilde{H}_n$ , it is clearly enough to ensure the existence of a  $\delta_n$  such that

$$\|(-\Delta_N^{\Omega_n} + 1)^{-1} - (-\Delta_{D\delta_n}^{\Omega_n} + 1)^{-1}\| \leq \frac{1}{n^2} \tag{3.11}$$

for all  $0 < \delta \leq \delta_n$  (recall the definition of  $-\Delta_{D_\delta N}^\Omega$ , given at the beginning of this section). Hence the desired result follows from Proposition 1.6. Q.E.D.

Again, the form domains  $\mathcal{Q}(\tilde{H}_n)$  are non-decreasing and they exhaust  $\mathcal{H}^1(\Omega)$ , the form domain of  $-\Delta_N^\Omega$ , in the following sense:

**PROPOSITION 3.3.** *Let  $\{w_k\}$  be a sequence of positive numbers with  $\sum w_k < 1$ . Then  $\bigcup_{n=N}^\infty \mathcal{Q}(\tilde{H}_n)$  is dense in  $\mathcal{H}^1(\Omega)$ , for  $N \in \mathbb{N}$ .*

*Proof.* Let  $u \in \mathcal{H}^1(\Omega)$ . Lemma 1.7 provides a sequence  $\{u_k\} \subset \mathcal{H}^1(\Omega)$  such that  $\|u - u_k\|_1 \rightarrow 0$  and  $u_k(x, y) = 0$  for  $(x, y)$  in the ball of radius  $1/k$ , centered at the point  $(A, 0)$ . Hence  $u_k \in \mathcal{Q}(\tilde{H}_n)$ , for  $n$  sufficiently large, and the result follows. Q.E.D.

We are now ready to put the pieces together.

**THEOREM 3.4.** *Suppose we are given a bounded sequence of lengths  $\{\eta_k\}$ ,  $\eta_k > 0$ . Then there exists a sequence  $\{w_k\}$  of widths,  $w_k > 0$ , such that the Neumann Laplacian on the domain  $\Omega = \Omega(\{\eta_k\}, \{w_k\})$ , defined as in (3.1)–(3.4), enjoys the following properties:*

(i)  $-\Delta_N^\Omega$  has no absolutely continuous spectrum.

(ii)  $\sigma_{\text{ess}}(-\Delta_N^\Omega) = \pi^2 \bigcup_{m=0}^\infty ((2m+1)/2)^2 \Sigma$ , where  $\Sigma$  is the set of limit points of the sequence  $\{\eta_k^{-2}\}$ .

*Remark.* Fleckinger and Métivier [9] consider a class of combs with compact  $(-\Delta_N + 1)^{-1}$ , and derive results on the asymptotic distribution of eigenvalues. Note that the comb shown in Fig. 2 has no essential spectrum.

*Proof.* By Proposition 3.1, we can find some  $w_1 > 0$  such that (3.8) and (3.9) hold. Using Propositions 3.1 and 3.2 we then choose  $w_k > 0$  inductively, making sure that (as we pass from  $k$  to  $k+1$ )

(i)  $w_{k+1} < \tilde{w}_{k+1}$  with  $\tilde{w}_{k+1}$  as in Proposition 3.1,

(ii)  $\sum_{j=1}^{k+1} w_j < \sum_{j=1}^s w_j + \delta_s$  for  $s = 1, \dots, k$ ,

with  $\delta_s$  as in Proposition 3.2. (The meaning of condition (ii) is the following: If  $w_1, \dots, w_s$  have been defined, then Proposition 3.2 imposes the restriction  $\sum_{k>s} w_k < \delta_s$ , and this is for  $s = 1, 2, \dots$ ) Hence, for this sequence  $\{w_k\}$ , (3.8) and (3.9) hold for all  $n \in \mathbb{N}$ .

As  $\tilde{H}_n \geq \tilde{H}_{n+1} \geq \dots \geq 0$ , we may use Proposition 3.3 and Kato [12, Theorem VIII-3.6 or Theorem 3.11], to conclude that  $\tilde{H}_n \rightarrow -\Delta_N^\Omega$  in the strong resolvent sense. It follows by (3.8) and (3.9) that  $H_n \rightarrow -\Delta_N^\Omega$  in the norm resolvent sense, and that

$$(H_0 + 1)^{-2} - (-\Delta_N^\Omega + 1)^{-2} \in \mathcal{B}_1$$

so that  $\sigma_{\text{ess}}(-\Delta_N^\Omega) = \sigma_{\text{ess}}(H_0)$  and  $\sigma_{\text{ac}}(-\Delta_N^\Omega) = \sigma_{\text{ac}}(H_0)$ .

Again, it is evident that  $\sigma_{ac}(H_0) = \emptyset$  and

$$\begin{aligned} \sigma_{ess}(H_0) &= \sigma_{ess} \left( \bigoplus_{k=1}^{\infty} -\Delta_{DN}^{D_k} \right) \\ &= \{ ((2m+1)/2)^2 \pi^2 \alpha \mid m \in \mathbf{N}_0, \alpha \in \Sigma \} \end{aligned}$$

and we are done.

Q.E.D.

In order to arrive at a full solution of our inverse problem (IP), we now modify the comb construction, using teeth of shrinking size with partitions of the following precise type.

For  $w > 0$  and  $0 \leq \gamma \leq w$ , the tooth  $D(w, \gamma)$  is a rectangle of height  $w + w^{1/4}$  and width  $w$ , with a horizontal partition at height  $w^{1/4}$  which leaves open a door of width  $\gamma$  (cf. Fig. 7). In the actual construction, we will attach a sequence of such teeth to  $\Omega_0 = (0, 1) \times (-1, 0)$ . Again, let  $-\Delta_{DN}^{D(w, \gamma)}$  denote the Laplacian on  $D(w, \gamma)$  with Dirichlet boundary conditions on the bottom and Neumann boundary conditions on the remaining parts of the boundary. We will use the following analogue of Lemma 2.3 to determine the parameter  $\gamma$  in the further construction.

LEMMA 3.5. *Let  $0 \leq \mu_1 \leq \dots \leq \mu_i \leq \dots$ ,  $\mu_i = \mu_i(w, \gamma)$ , denote the (repeated) eigenvalues of  $-\Delta_{DN}^{D(w, \gamma)}$ , for  $0 < w \leq 1$  and  $0 \leq \gamma \leq w$ . We have:*

(a)  $\mu_i(w, \gamma) \geq \mu_i(w, 0)$ , for  $i \in \mathbf{N}$ . In particular,  $\mu_2 \rightarrow \infty$  as  $w \rightarrow 0$ , and, more strongly,  $\sum_{i \geq 2} (\mu_i + 1)^{-2} \rightarrow 0$  as  $w \rightarrow 0$ , uniformly in  $0 \leq \gamma \leq w$ .

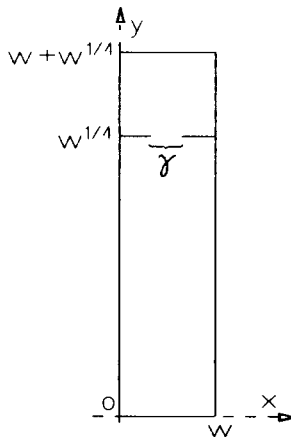


FIG. 7. The tooth  $D(w, \gamma)$ .

(b) Suppose  $\lambda > 0$  is given, and  $w_\lambda > 0$  is such that  $\mu_2(w, 0) > \lambda$ , for  $0 < w < w_\lambda$ . Then, for any  $0 < w \leq w_\lambda$ , there exists a  $\gamma = \gamma(w, \lambda) \in (0, w)$  such that

$$\mu_1(w, \gamma(w, \lambda)) = \lambda, \quad 0 < w \leq w_\lambda.$$

The proof is similar to the proof of Lemma 2.3.

Suppose now we are given a sequence  $\{\lambda_k\} \subset (0, \infty)$ . The preceding lemma enables us to find  $\bar{w}_k > 0$  and functions  $\gamma_k(w)$ , defined for  $0 < w \leq \bar{w}_k$ , such that the first eigenvalue of the Dirichlet–Neumann Laplacian on  $D(w, \gamma_k(w))$  is just  $\lambda_k$ , whereas the second eigenvalue is greater than  $k$ . We denote these families of teeth by  $D_k(w)$ ,  $0 < w \leq \bar{w}_k$ . (In fact, in the actual construction of combs, we will use translates of these  $D_k$ , but we will not make this explicit in the notation.)

Next, we define the objects  $a_k, \Omega_n, \Omega, H_n$ , and  $\tilde{H}_n$  as in (3.1)–(3.7), with the only difference that each tooth is now a set  $D_k(w)$ , translated in the  $x$ -direction by an amount of  $a_k$ . Clearly, statements and proofs of Propositions 3.2 and 3.3 apply essentially unchanged. By Lemma 3.5(a), and since  $\mu_1(-\Delta_{DN}^{D_k(w)}) = \lambda_k$ , by construction, we are in the position to apply Proposition 1.9 (also note that, by Neumann bracketing,  $(-\Delta_N^{\Omega_n} + 1)^{-2}$  is trace class, for all  $n$ ), and we obtain the estimates (3.8) and (3.9) of Proposition 3.1. This leads to the following main result.

**THEOREM 3.6.** *Suppose we are given a sequence  $\{\lambda_k\} \subset (0, \infty)$ . Then there exists a bounded, open, connected set  $\Omega \subset \mathbf{R}^2$  such that  $\sigma_{ac}(-\Delta_N^\Omega) = \emptyset$  and*

$$\sigma_{ess}(-\Delta_N^\Omega) = \{\text{limit points of } \{\lambda_k\}\}.$$

*Proof.* Again, we use (analogues of) Propositions 3.1–3.3 in order to find a sequence  $\{w_k\}$  of positive numbers so that all the estimates (3.8)–(3.10) hold.

As before,  $\tilde{H}_n \geq \tilde{H}_{n+1} \geq \dots \geq 0$ , and so Proposition 3.3 combined with the usual convergence theorems for quadratic forms implies that  $\tilde{H}_n \rightarrow -\Delta_N^\Omega$  in the strong resolvent sense. By (3.8)–(3.10) this yields  $H_n \rightarrow -\Delta_N^\Omega$  in the norm resolvent sense, and

$$(H_0 + 1)^{-2} - (-\Delta_N^\Omega + 1)^{-2} \in \mathcal{B}_1.$$

Hence,  $\sigma_{ac}(-\Delta_N^\Omega) = \sigma_{ac}(H_0) = \emptyset$  and

$$\begin{aligned} \sigma_{ess}(-\Delta_N^\Omega) &= \sigma_{ess}\left(\bigoplus_{k=1}^{\infty} -\Delta_{DN}^{D_k(w_k)}\right) \\ &= \{\text{limit points of } \{\lambda_k\}\} \end{aligned}$$

and we are done.

Q.E.D.



It is clear that we can construct  $\Omega$  as small as we please, without changing the result of Theorem 3.6. This leads to the following solution of the inverse problem (IP).

**COROLLARY 3.7.** *For any closed set  $S \subset [0, \infty)$ , there exists a bounded, connected set  $\Omega$  contained in the unit ball of  $\mathbf{R}^2$ , such that*

$$\sigma_{\text{ess}}(-\Delta_N^\Omega) = S.$$

APPENDIX

In this appendix, we discuss the main modifications needed in Propositions 1.4 and 1.6 to derive the following stronger version of Theorem 2.1.

**THEOREM A.1.** *Suppose we are given a sequence of open domains  $R_k \subset \mathbf{R}^2$ ,  $k = 1, 2, \dots$ , which satisfy conditions (2.1)–(2.3). Then there exists a sequence  $\{\bar{w}_k\}$  of positive numbers such that*

$$\sigma_{\text{ac}}(-\Delta_N^\Omega) = \emptyset, \quad \sigma_{\text{ess}}(-\Delta_N^\Omega) = \sigma_{\text{ess}}\left(\bigoplus_{k=1}^{\infty} -\Delta_N^{R_k}\right)$$

for any sequence  $\{w_k\}$  satisfying  $0 < w_k \leq \bar{w}_k$ ,  $k \in \mathbf{N}$ , where  $\Omega = \Omega(\{w_k\})$  is given by (2.5).

We shall need the estimates provided in Propositions 1.5 and 1.6 in a form which is largely independent of the domains involved, in the sense that  $w_\epsilon$  can be chosen simultaneously for a family of domains  $\Omega_q^{(t)}$ ,  $0 \leq t \leq 1$ ,  $q = 1, 2$ . In the sequel, let  $B_\rho$  denote the ball of radius  $\rho$ , centered at the origin in  $\mathbf{R}^2$ , for  $\rho > 0$ .

**LEMMA A.2.** *Consider a family of domains  $\Omega^{(t)}$ ,  $0 \leq t \leq 1$ ,  $\Omega^{(t)}$  contained in the left half-plane in  $\mathbf{R}^2$ , satisfying*

$$(-s_0, 0) \times (-s_0, s_0) \subset \Omega^{(t)}, \quad 0 \leq t \leq 1$$

for some  $s_0 > 0$ . Then, for any  $M > 0$  there exists a  $C > 0$  such that

$$\sup |\psi \upharpoonright_{B_{s_0/2}}| + \sup |\nabla \psi \upharpoonright_{B_{s_0/2}}| \leq C$$

for any normalized eigenfunction  $\psi$  of  $-\Delta_N^{\Omega^{(t)}}$  associated with an eigenvalue  $\lambda \leq M$ .

*Proof.* Let  $t \in [0, 1]$ ,  $\lambda \leq M$ , and suppose  $\psi \in \mathcal{D}(-\Delta_N^{\Omega^{(t)}})$  satisfies  $\|\psi\| = 1$  and  $-\Delta_N^{\Omega^{(t)}}\psi = \lambda\psi$ . Reflection along the  $y$ -axis yields a function  $\tilde{\psi} \in \mathcal{H}^1(B_s)$ , which is a weak solution of  $-\Delta\tilde{\psi} = \lambda\tilde{\psi}$  in  $B_s$ , for  $0 < s < s_0$ .

The desired result then follows by repeated use of the a priori estimates given in Gilbarg and Trudinger [10, Theorem 8.10], and an application of the Sobolev embedding theorem. Q.E.D.

We now join two families of domains  $\Omega_1^{(t)}$  and  $\Omega_2^{(t)}$  by a narrow passage  $P'_w = [0, L] \times (-w, w)$ . In view of Lemma A.2 we require  $\Omega_1^{(t)}$  to be of the type described above, while the domains  $\Omega_2^{(t)}$  should lie to the right of  $\{L\} \times \mathbf{R}$  and should contain the set  $(L, L + s_0) \times (-s_0, s_0)$ . We furthermore require the operators  $(-A_N^{Q_q^{(t)}} + 1)^{-1}$  to be compact, for  $q = 1, 2$  and  $0 \leq t \leq 1$ . Again, let  $\lambda_i^{(t)}$  and  $\tilde{\lambda}_i^{(t)}$  denote the (repeated) eigenvalues of

$$H_w^{(t)} = -A_N^{Q^{(t,w)}}$$

where

$$\Omega(t, w) = \Omega_1^{(t)} \cup P'_w \cup \Omega_2^{(t)}$$

and of the decoupled operator

$$\tilde{H}_w^{(t)} = -A_N^{Q_1^{(t)}} \oplus -A_{DN}^{P_w} \oplus -A_N^{Q_2^{(t)}}$$

respectively, where the mixed boundary conditions on the passage are chosen as in Section 1. Let  $\{E_\lambda^{(t)}\}$ ,  $\{\tilde{E}_\lambda^{(t)}\}$  denote the spectral families associated with  $H_w^{(t)}$  and  $\tilde{H}_w^{(t)}$ , respectively. We have

**PROPOSITION A.3.** *In addition to the assumptions made above, suppose that for any  $A > 0$  there exists a constant  $C_A$  such that*

$$\#\{i \mid \tilde{\lambda}_i^{(t)} \leq A\} \leq C_A, \quad 0 \leq t \leq 1.$$

*Then, for any  $\varepsilon > 0$ , there exists  $w_\varepsilon > 0$  such that*

$$\|E_\lambda^{(t)} - \tilde{E}_\lambda^{(t)}\| < \varepsilon, \quad 0 < w < w_\varepsilon$$

*for all  $\lambda \leq A$  which satisfy  $\text{dist}(\lambda, \sigma(\tilde{H}_w^{(t)})) > \varepsilon$ .*

*Proof.* Using Lemma A.2, we are in a position to control the extension process  $\tilde{\varphi}_i \mapsto \tilde{\psi}_i$ , described just before Proposition 1.4, in a  $t$ -independent way: We obtain

$$\|\tilde{\psi}_i \upharpoonright P_w\|_1 \rightarrow 0, \quad w \rightarrow 0$$

uniformly in  $t$ . The rest of the proof is similar to the proof of Proposition 1.4. Q.E.D.

It is now easy to obtain the following generalization of Proposition 1.5:

**PROPOSITION A.4.** *Let  $\Omega_q^{(t)}$ ,  $q = 1, 2$ ,  $0 \leq t \leq 1$  be as above, and suppose that, in addition,*

$$\sum_{i > N} (\tilde{\lambda}_i^{(t)} + 1)^{-2} \rightarrow 0, \quad N \rightarrow \infty$$

*uniformly in  $0 \leq t \leq 1$ . Then*

$$\begin{aligned} \|(H_w^{(t)} + 1)^{-1} - (\tilde{H}_w^{(t)} + 1)^{-1}\| &\rightarrow 0, & w \rightarrow 0, \\ \|(H_w^{(t)} + 1)^{-2} - (\tilde{H}_w^{(t)} + 1)^{-2}\|_{\mathcal{H}^1} &\rightarrow 0, & w \rightarrow 0, \end{aligned}$$

*uniformly in  $0 \leq t \leq 1$ .*

*Proof.* There are only some obvious changes in the proof of Proposition 1.5. Q.E.D.

We finally have to change Neumann boundary conditions on the line segment  $\{0\} \times [-w, w]$  into a Dirichlet boundary condition.

**PROPOSITION A.5.** *Let  $\Omega^{(t)}$  be as in Lemma A.2, and let  $-\Delta_{D_w, N}^{\Omega^{(t)}}$  obey Dirichlet boundary conditions on  $\{0\} \times [-w, w]$ , and Neumann boundary conditions on the remaining portions of  $\partial\Omega^{(t)}$ . Also assume that*

$$\lambda_i^{(t)} \rightarrow \infty, \quad i \rightarrow \infty,$$

*uniformly in  $0 \leq t \leq 1$ , where the  $\lambda_i^{(t)}$  denote the (repeated) eigenvalues of  $-\Delta_N^{\Omega^{(t)}}$ . Then*

$$\|(-\Delta_N^{\Omega^{(t)}} + 1)^{-1} - (-\Delta_{D_w, N}^{\Omega^{(t)}} + 1)^{-1}\| \rightarrow 0, \quad w \rightarrow 0,$$

*uniformly in  $0 \leq t \leq 1$ .*

*Proof.* The proof is similar to the proof of Proposition 1.6 but it requires a  $t$ -independent version of Lemma 1.7 for eigenfunctions; see Lemma A.6 below. Q.E.D.

**LEMMA A.6.** *Let  $\Omega^{(t)}$  be as above, and let  $\Lambda > 0$ . Then there exists a sequence of cut-off functions  $\phi_k \in C^\infty(\mathbf{R}^2)$  with the following properties:*

- (a)  $0 \leq \phi_k \leq 1$ ,
- (b)  $\phi_k$  vanishes in a neighborhood of the origin,
- (c) for any  $\varepsilon > 0$ , there exists  $k_0 \in \mathbf{N}$  such that for  $k > k_0$ ,

$$\|u - \phi_k u\|_{\mathcal{H}^1(\Omega^{(t)})} < \varepsilon$$

*for all normalized eigenfunctions  $u$  of  $-\Delta_N^{\Omega^{(t)}}$ , associated with eigenvalues smaller than  $\Lambda$ , for  $0 \leq t \leq 1$ .*

*Proof.* Applying the Banach–Saks theorem to the sequence of cut-offs  $\varphi_k$  used in Lemma 1.7, we see that, for a suitable sequence  $\{k_j\} \subset \mathbb{N}$

$$\left\| \frac{1}{N} \sum_{j=1}^N \varphi_{k_j} \chi_{B_2} \right\|_{\mathcal{H}^1(B_2)} \rightarrow 0, \quad N \rightarrow \infty.$$

We then may define  $\phi_N = 1/N \sum_{j=1}^N \varphi_{k_j}$ , for  $N \in \mathbb{N}$ . As the eigenfunctions  $u$  (together with their gradients) obey a uniform bound on the ball  $B_{30/2}$ , by Lemma A.2, the result follows by straightforward estimates. Q.E.D.

*Proof of Theorem A.1.* The proof now follows closely the lines of proof of Theorem 2.1, using Propositions A.4 and A.5 in place of Propositions 1.5 and 1.6, respectively. Q.E.D.

#### REFERENCES

1. R. A. ADAMS, "Sobolev Spaces," Academic Press, New York, 1975.
2. CH. J. AMICK, Some remarks on Rellich's theorem and the Poincaré inequality, *J. London Math. Soc. (2)* **18** (1978), 81–93.
3. J. M. ARRIETA, J. K. HALE, AND Q. HAN, Eigenvalue problems for nonsmoothly perturbed domains, preprint, Georgia Institute of Technology, 1989.
4. Y. COLIN DE VERDIÈRE, Construction de laplaciens dont une partie finie du spectre est donnée, *Ann. Sci. École Norm. Sup.* **20** (1987), 599–615.
5. R. COURANT AND D. HILBERT, "Methods of Mathematical Physics," Vol. I, Interscience, New York, 1966.
6. R. COURANT AND D. HILBERT, "Methoden der mathematischen Physik," Vol. II, Springer, Berlin, 1937.
7. W. D. EVANS AND D. J. HARRIS, Sobolev embeddings for generalized ridged domains, *Proc. London Math. Soc. (3)* **54** (1987), 141–175.
8. W. D. EVANS AND D. J. HARRIS, On the approximation numbers of Sobolev embeddings for irregular domains, *Quart. J. Math. Oxford Ser. (2)* **40** (1989), 13–42.
9. J. FLECKINGER AND G. MÉTIVIER, Théorie spectrale des opérateurs uniformément elliptiques sur quelques ouverts irréguliers *C. R. Acad. Sci. Paris Sér. A* **276** (1973), 913–916.
10. D. GILBARG AND N. S. TRUDINGER, "Elliptic Partial Differential Equations of Second Order," 2nd ed., Springer, New York, 1983.
11. SH. JIMBO, The singularly perturbed domain and the characterization for the eigenfunctions with Neumann boundary condition, *J. Differential Equations* **77** (1989), 32–350.
12. T. KATO, "Perturbation Theory for Linear Operators," Springer, New York, 1966.
13. M. REED AND B. SIMON, "Methods of Modern Mathematical Physics, Vol. I, Functional Analysis," revised and enlarged edition, Academic Press, New York, 1980.
14. M. REED AND B. SIMON, "Methods of Modern Mathematical Physics, Vol. III, Scattering Theory," Academic Press, New York, 1979.
15. M. REED AND B. SIMON, "Methods of Modern Mathematical Physics, Vol. IV, Analysis of Operators," Academic Press, New York, 1978.
16. B. SIMON AND TH. SPENCER, Trace class perturbations and the absence of absolutely continuous spectra, *Comm. Math. Phys.* **125** (1989), 113–125.